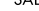
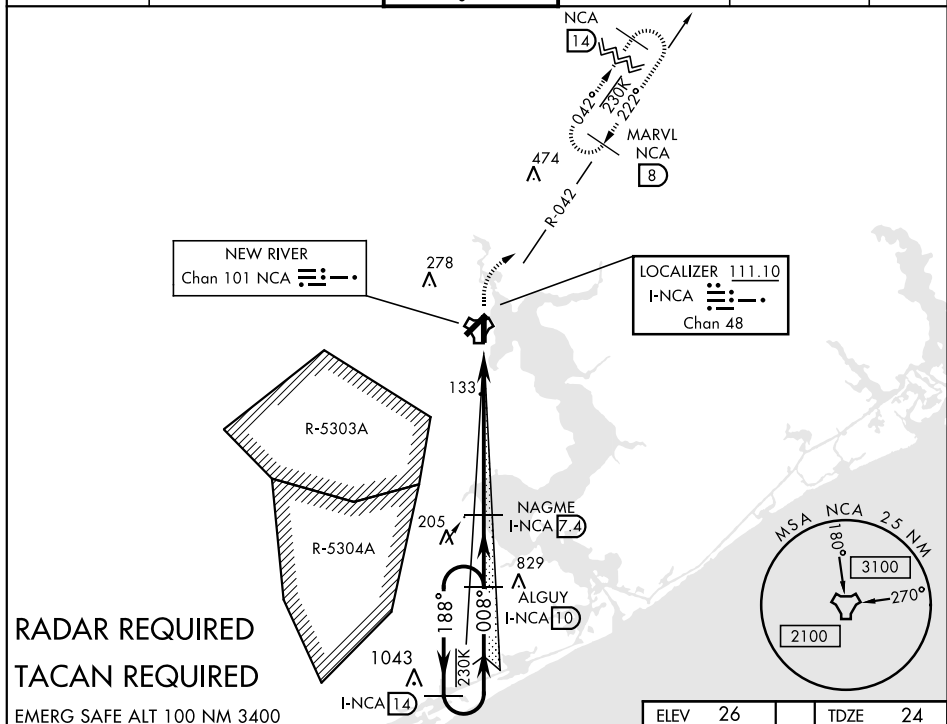


ILS or LOC/DME RWY 1

LOC I-NCA 111.10 Chan 48		APCH CRS 008°	Rwy Idg 4789 TDZE 24 Arpt Elev 26	AL-732 [USN]	NEW RIVER MCAS (MC CUTCHEON FLD) (KNCA)	
V *When ALS inop, increase CAT ABCD vis to $\frac{3}{4}$ mile. ** When ALS inop, increase CAT ABCD vis to 1 mile.				SALS 	MISSED APPROACH: Climb to 500, then climbing right turn to 3000, intercept NCA R-042 to MARVL and hold, continue climb-in-hold to 3000.	
ATIS ★ 288.325	CHERRY POINT APP CON 119.35 377.175		NEW RIVER TOWER ★ 120.00 ★ 360.2	GND CON 121.8 254.275	CLNC DEL 269.25	ASR/PAR



RADAR REQUIRED
TACAN REQUIRED

EMERG SAFE ALT 100 NM 3400

