


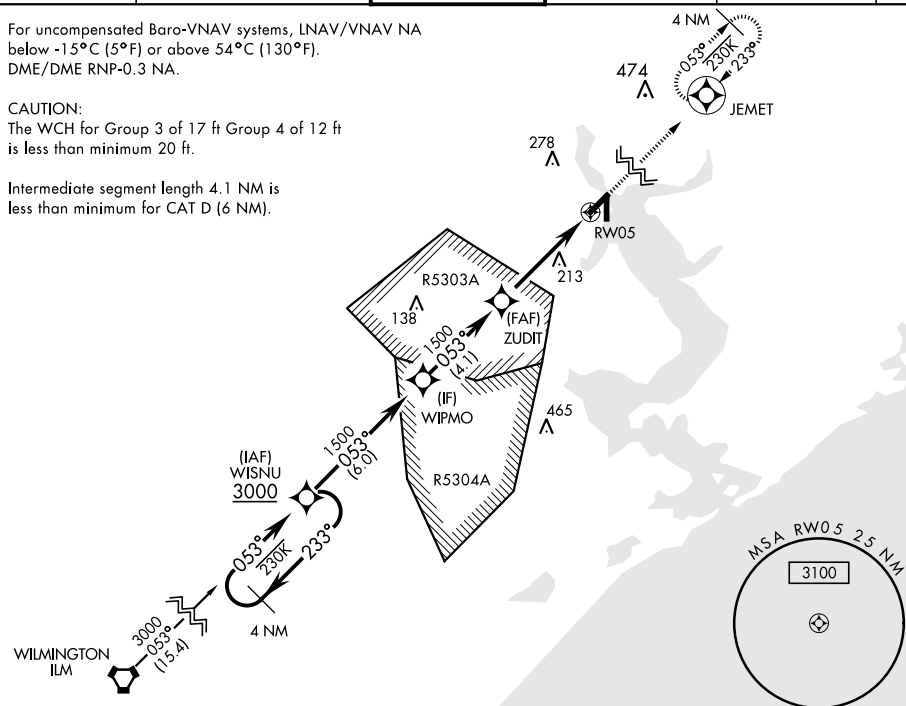
## RNAV (GPS) RWY 5

WAAS Chan <b>77243</b> <b>W05A</b>	APCH CRS <b>053°</b>	Rwy Idg <b>5127</b> TDZE <b>26</b> Arpt Elev <b>26</b>	AL-732 [USN]      NEW RIVER MCAS (MC CUTCHEON FLD) (KNCA)			
			MISSED APPROACH: Climbing to 1500 direct JEMET and hold.			
ATIS ★ <b>288.325</b>	CHERRY POINT APP CON <b>119.35 377.175</b>	NEW RIVER TOWER ★ <b>120.0 0 ★ 360.2</b>	GND CON <b>121.8 254.275</b>	CLNC DEL <b>269.25</b>	ASR/ PAR	

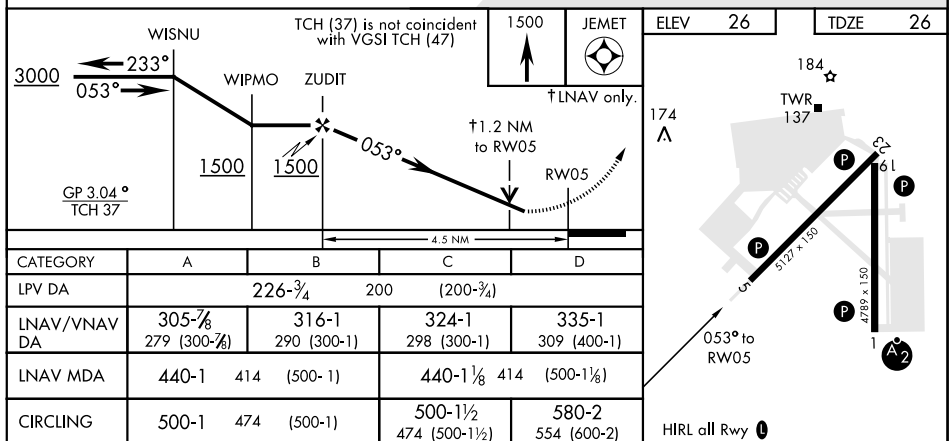
For uncompensated Baro-VNAV systems, LNAV/VNAV NA below -15°C (5°F) or above 54°C (130°F).  
DME/DME RNP-0.3 NA.

**CAUTION:**  
The WCH for Group 3 of 17 ft Group 4 of 12 ft  
is less than minimum 20 ft.

Intermediate segment length 4.1 NM is less than minimum for CAT D (6 NM).



EMERG SAFE ALT 100 NM 3400



SE-2, 31 DEC 2020 to 28 JAN 2021

SE-2, 31 DEC 2020 to 28 JAN 2021