

LOC/DME I-EDE	APP CRS	Rwy Idg	6000
110.95	190°	TDZE	20
Chan 46 (Y)		Apt Elev	20

ILS or LOC RWY 19

NORTHEASTERN RGNL (EDE)

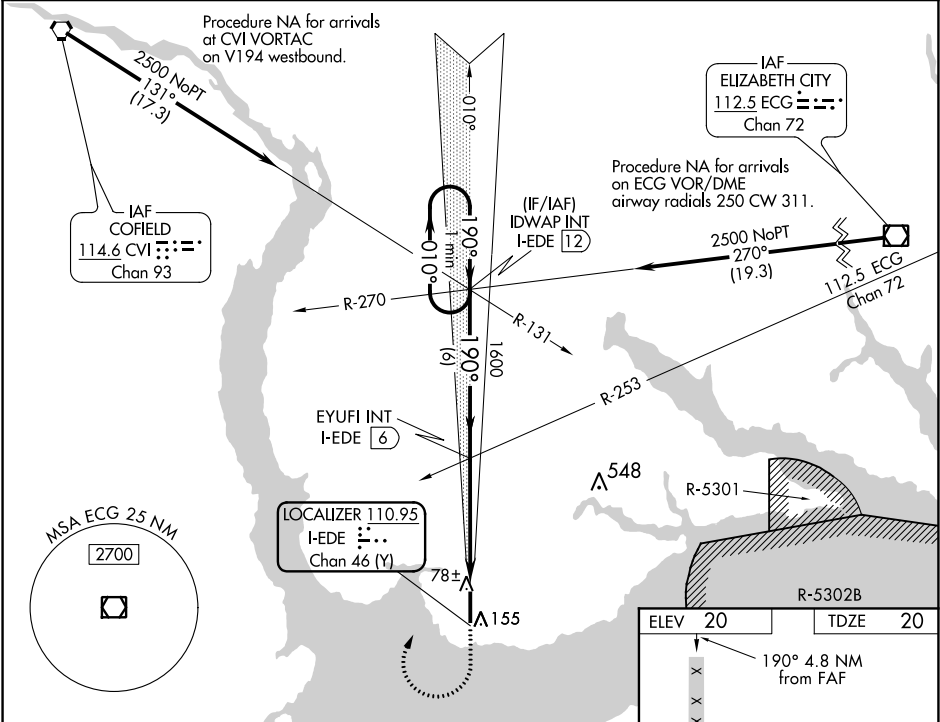
DME or RADAR required for procedure entry.

▼

When local altimeter setting not received, use Elizabeth City altimeter setting and increase all DA 56 feet and all MDA 60 feet and increase S-ILS 19 all Cats and S-LOC 19 Cats C/D visibility ⅛ mile. VDP NA when using Elizabeth City altimeter setting.

MISSED APPROACH: Climb to 600 then climbing right turn to 2500 on heading 030° and I-EDE localizer N course to IDWAP INT/I-EDE 12 DME and hold.

AWOS-3 118.275	WASHINGTON CENTER 123.85 279.65	UNICOM 123.0 (CTAF) 0
-------------------	------------------------------------	--------------------------



VGSI and ILS glidepath not coincident (VGSI Angle 3.00/TCH 48).

One Minute Holding Pattern

↑ 600 2500

hdg 030°

I-EDE N crs

IDWAP INT

\* LOC only.

2500 ← 010°

GS 3.00° TCH 43

190° →

1600

1600

6 NM

3.9 NM

1.3 NM

CATEGORY

A

B

C

D

S-ILS 19

220-¾

200 (200-¾)

S-LOC 19

480-1

460 (500-1)

480-1⅓

460 (500-1⅓)

CIRCLING

520-1

500 (500-1)

520-1½

500 (500-1½)

580-2

560 (600-2)

