

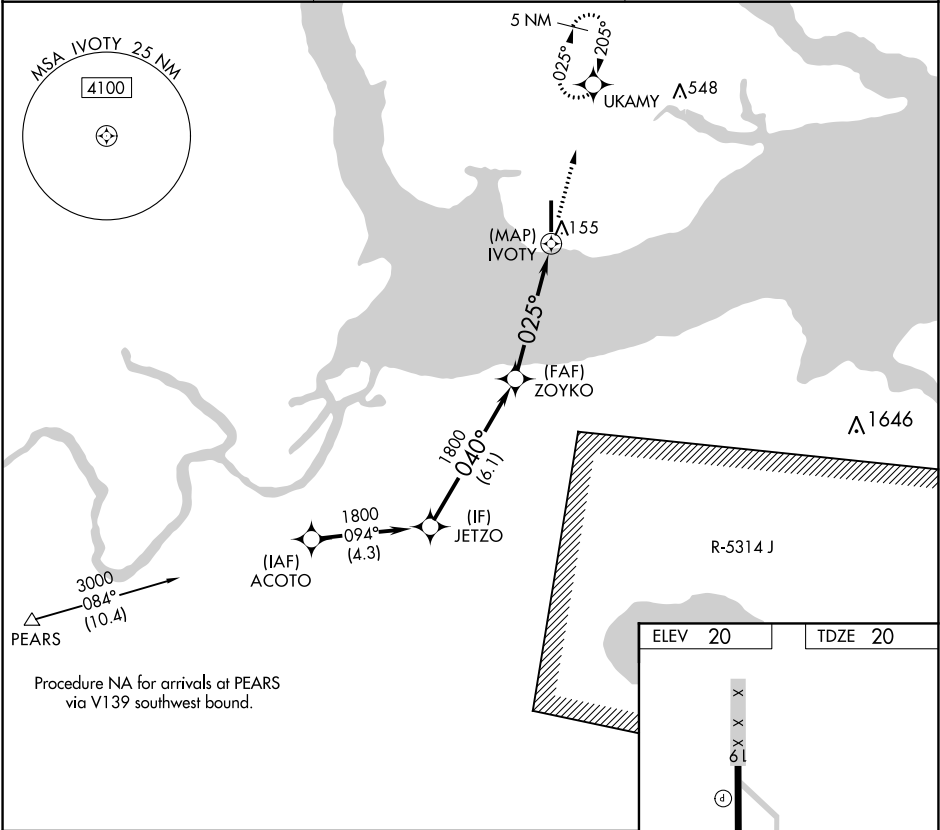
APP CRS	Rwy Idg	6000
025°	TDZE	20
	Apt Elev	20

RNAV (GPS) RWY 1

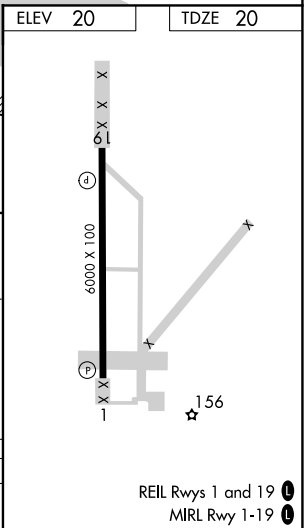
NORTHEASTERN RGNL (EDE)

RNP APCH.	MISSED APPROACH: Climb to 4000 direct UKAMY and hold, continue climb-in-hold to 4000.
▼ If local altimeter setting not received, use Elizabeth City altimeter setting and increase all MDAs 60 feet. Rwy 1 helicopter visibility reduction below ¾ SM NA.	

AWOS-3 118.275	WASHINGTON CENTER 123.85 279.65	UNICOM 123.0 (CTAF) 0
-------------------	------------------------------------	--------------------------



	JETZO	ZOYKO	IVOTY	UKAMY
	1800	1800	155	4000
	040°	025°		
	6.1 NM	5 NM	0.5 NM	
CATEGORY	A	B	C	D
LNAV MDA	460-1	440 (500-1)	460-1¼ 440 (500-1¼)	460-1½ 440 (500-1½)



SE-2, 31 DEC 2020 to 28 JAN 2021

SE-2, 31 DEC 2020 to 28 JAN 2021