

WAAS	APP CRS	Rwy Idg	5342
CH 97421	053°	TDZE	124
W05A		Apt Elev	125

RNAV (GPS) RWY 5

LUMBERTON RGNL (LBT)

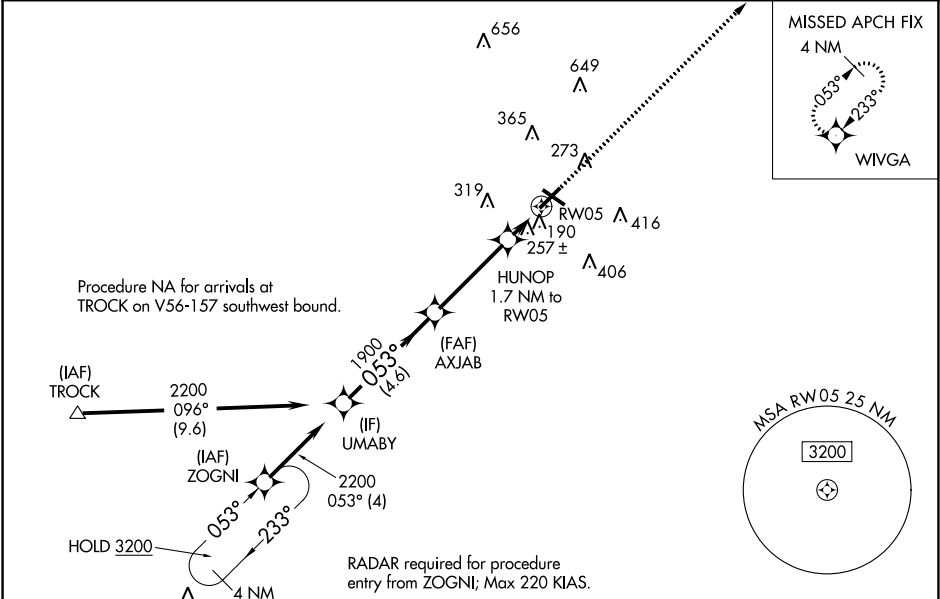
▼

⚠

DME/DME RNP-0.3 NA. When local altimeter setting not received use Maxton altimeter setting and increase all DA 56 feet and all MDA 60 feet; increase LNAV/VNAV all Cats visibility ⅛ mile and LNAV Cat C visibility ¼ mile. Baro-VNAV and VDP NA with Maxton altimeter setting. Circling to Rwy 13 and 31 NA at night. For uncompensated Baro-VNAV systems, LNAV/VNAV NA below -1.5°C (5°F) or above 54°C (130°F).

MISSED APPROACH: Climb to 2000 direct WIVGA and hold.

ASOS 134.775	FAYETTEVILLE APP CON 133.0 290.25	UNICOM 122.8 (CTAF) 0
-----------------	--------------------------------------	--------------------------



ELEV 125		TDZE 124	
UMABY		WIVGA	
2200		2000	
Procedure Turn NA		* LNAV only.	
GP 3.00°		TCH 60	
1900		720*	
4.6 NM		3.7 NM	
0.6		1.1	
CATEGORY	A	B	D
LPV DA	327-¾	203 (300-¾)	NA
LNAV/VNAV DA	538-1⅜	414 (500-1⅜)	NA
LNAV MDA	520-1	396 (400-1)	520-1⅛ 396 (400-1⅛)
CIRCLING	660-1	535 (600-1)	660-1½ 535 (600-1½)

MIRL Rwy 5-23 0

REIL Rwys 5 and 23 0