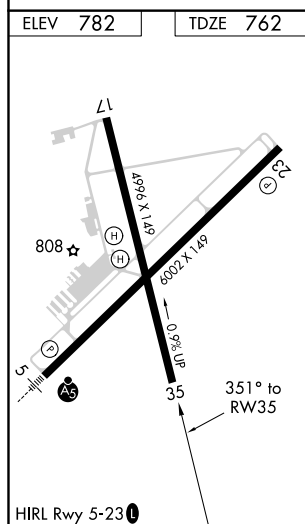
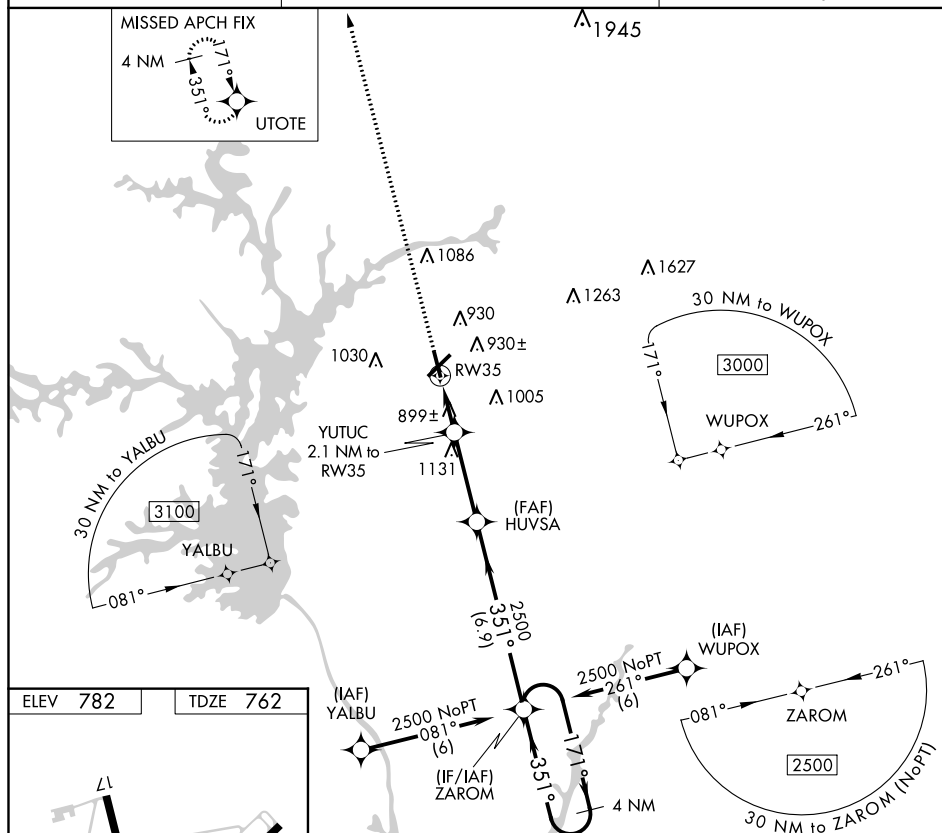


RNAV (GPS) RWY 35
ANDERSON RGNL (AND)

MISSED APPROACH:
Climb to 3200 direct
UTOTE and hold.

CTAF
123.6 L



Visual Segment - Obstacles.

4 NM Holding Pattern

HUWSA

ZAROM

YUTUC
2.1 NM to RW35

RW35

2500

351°

171°

2500

1440

2.1 NM

3.3 NM

6.9 NM

CATEGORY	A	B	C	D
LP MDA	1160-1	398 (400-1)	1160-1 $\frac{1}{8}$	398 (400-1 $\frac{1}{8}$)
LNAV MDA	1180-1	418 (400-1)	1180-1 $\frac{1}{8}$	418 (400-1 $\frac{1}{8}$)
C CIRCLING	1260-1 478 (500-1)	1320-1 538 (600-1)	1440-1 $\frac{3}{4}$ 658 (700-1 $\frac{3}{4}$)	1500-2 $\frac{1}{4}$ 718 (800-2 $\frac{1}{4}$)

SE-2, 31 DEC 2020 to 28 JAN 2021