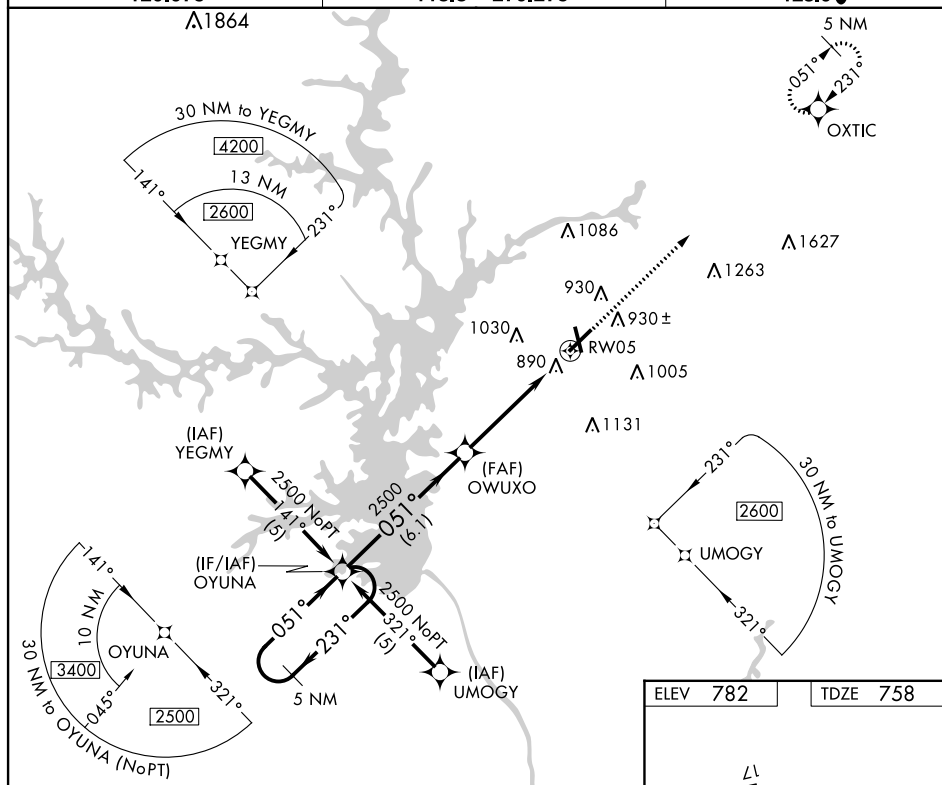


RNAV (GPS) RWY 5

ANDERSON RGNL (AND)

MISSED APPROACH: Climb to 3000 direct OXTIC and hold.

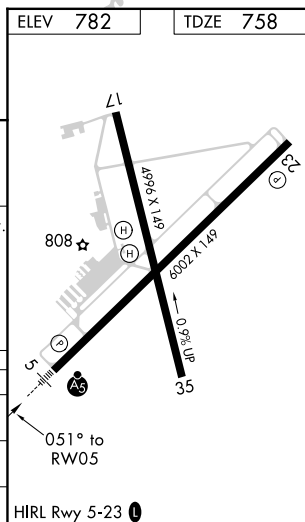
CTAF
123.6 L



3000	OXTIC

[illegible]

CATEGORY	A	B	C	D
LPV DA	958- $\frac{1}{2}$ 200 (200- $\frac{1}{2}$)			
LNAV MDA	1200- $\frac{1}{2}$	442 (500- $\frac{1}{2}$)	1200- $\frac{3}{4}$ 442 (500- $\frac{3}{4}$)	1200-1 442 (500-1)
C CIRCLING	1260-1 478 (500-1)	1320-1 538 (600-1)	1440-1 $\frac{3}{4}$ 658 (700-1 $\frac{3}{4}$)	1500-2 $\frac{1}{4}$ 718 (800-2 $\frac{1}{4}$)



SE-2, 31 DEC 2020 to 28 JAN 2021