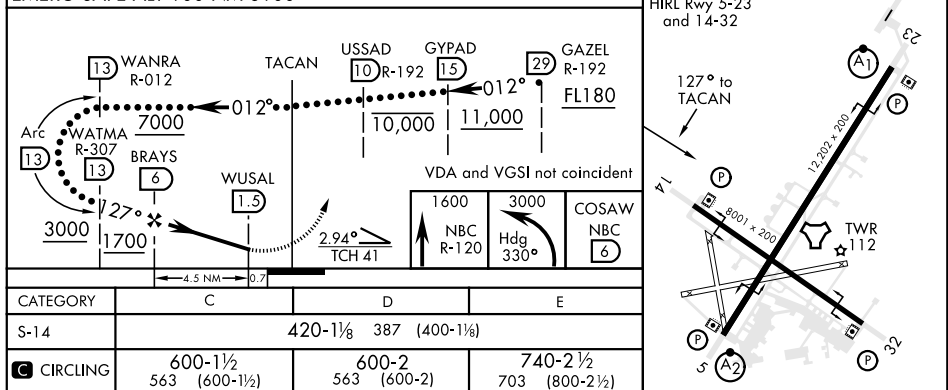
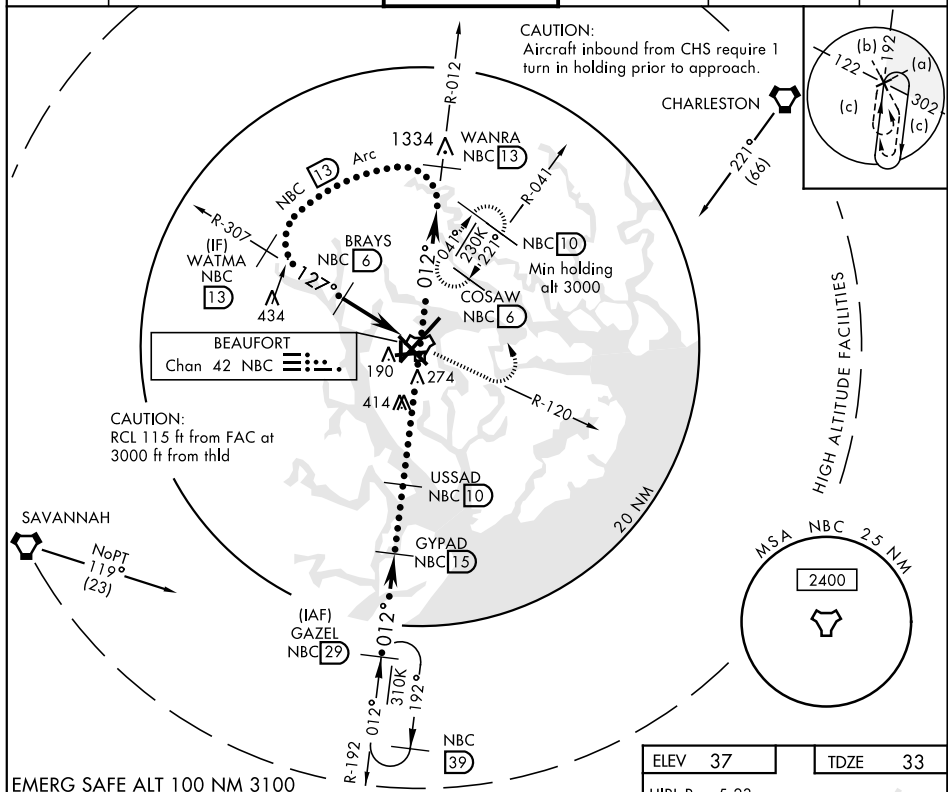


BEAUFORT, SOUTH CAROLINA

HI-TACAN Y RWY 14

TACAN NBC Chan 42		APCH CRS 127°	Rwy Idg 8001 TDZE 33 Arpt Elev 37	JAL-916 [USN]		BEAUFORT MCAS (MERRITT FLD) (KNBC)	
RADAR Required ▼			MISSED APPROACH: Climb to 1600 on NBC TACAN R-120, then climbing left turn to 3000 via hdg 330° to intercept NBC R-041 to 6 DME (COSAW) and hold. Continue climb in hold to 3000.				
ATIS ★ 279.525	BEAUFORT APP CON (ABV 3000) 125.125 292.125 (3000 and BLW) 123.7 269.125		BEAUFORT TOWER ★ 119.05 342.875		GND CON 128.15 348.625	CLNC DEL 128.15 254.375	ASR/PAR



BEAUFORT, SOUTH CAROLINA

32° 29' N-80° 43' W

BEAUFORT MCAS (MERRITT FLD) (KNBC)

HI-TACAN Y RWY 14

Amdt 2 01FEB18

SE-2, 31 DEC 2020 to 28 JAN 2021