

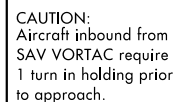
HI-TACAN Z RWY 23

BEAUFORT MCAS (MERRITT FLD) (KNBC)

† MISSED APPROACH: Climb to 500, then climbing right turn to 3000, intercept NBC TACAN R-307 direct BRAYS and hold.

† CAUTION: Missed Approach  
Minimum Climb Rate to 3000Controlling Obstacle unk

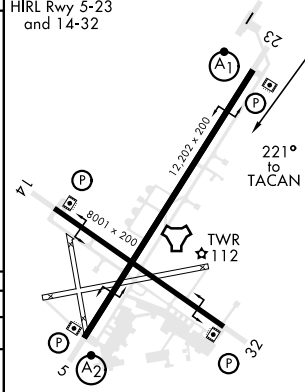
CAUTION:  
FAC 88 ft from RCL  
at 3000 ft from rwy thld



EMERG SAFE ALT 100 NM 3100



HIRL Rwy 5-23  
and 14-32



CATEGORY	C	D	E
S-23 *	360- $\frac{3}{4}$	344	(400- $\frac{3}{4}$ )
<b>C</b> CIRCLING	600-1 $\frac{1}{2}$ 563 (600-1 $\frac{1}{2}$ )	600-2 563 (600-2)	740-2 $\frac{1}{2}$ 703 (800-2 $\frac{1}{2}$ )

## HI-TACAN Z RWY 23