

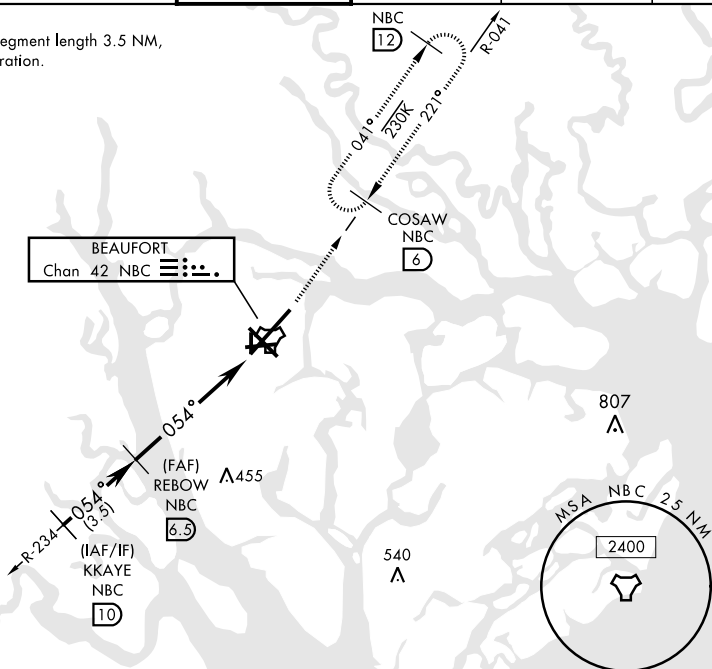


TACAN RWY 5

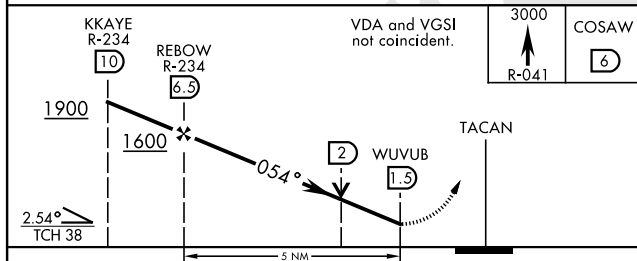
TACAN NBC Chan <b>42</b>	APCH CRS <b>054°</b>	Rwy Idg <b>12,202</b> TDZE <b>37</b> Arpt Elev <b>37</b>	AL-916 [USN]		BEAUFORT MCAS (MERRITT FLD) (KNBC)	
RADAR required.				MISSED APPROACH: Climb to 3000 via NBC R-041 to COSAW and hold. Continue climb in hold to 3000.		
 * When ALS inop, increase vis CAT AB to 1 mile, CAT CDE to 1¼ miles.						
ATIS ★ <b>279.525</b>	BEAUFORT APP CON (ABV 3000) <b>125.125 292.125</b> (3000 and BLW) <b>123.7 269.125</b>		BEAUFORT TOWER ★ <b>119.05 342.875</b>	GND CON <b>128.15 348.625</b>	CLNC DEL <b>128.15 254.375</b>	ASR/PAR

**CAUTION:** Intermediate segment length 3.5 NM, recommend early configuration.

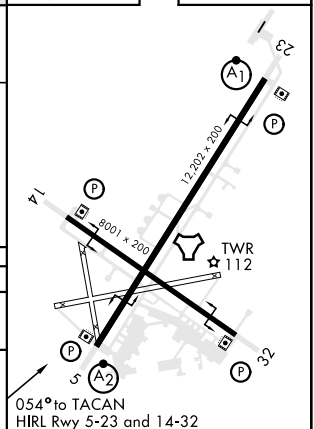
378  
A

EMERG SAFE ALT 100 NM 3100

ELEV	37		TDZE	37
------	----	--	------	----



CATEGORY	A	B	C	D	E
S-5 *	460- $\frac{3}{4}$	423 (500- $\frac{3}{4}$ )	460-1 423 (500-1)		
<b>C</b> CIRCLING	500-1 463 (500-1)		600-1 $\frac{1}{2}$ 563 (600-1 $\frac{1}{2}$ )	600-2 563 (600-2)	720-2 $\frac{1}{2}$ 683 (700-2 $\frac{1}{2}$ )



# TACAN RWY 5