

RNAV (GPS) RWY 24

APCH CRS 241°	Rwy Idg 8999 TDZE 316 Arpt Elev 321
-------------------------	--

AL-3017 (USAF)

NORTH AF AUX (KXNO)

T * Circling to Rwy 5-23 not authorized.

MISSED APPROACH: Climb to 2000 direct GOTEY and hold.

ASOS
118.525

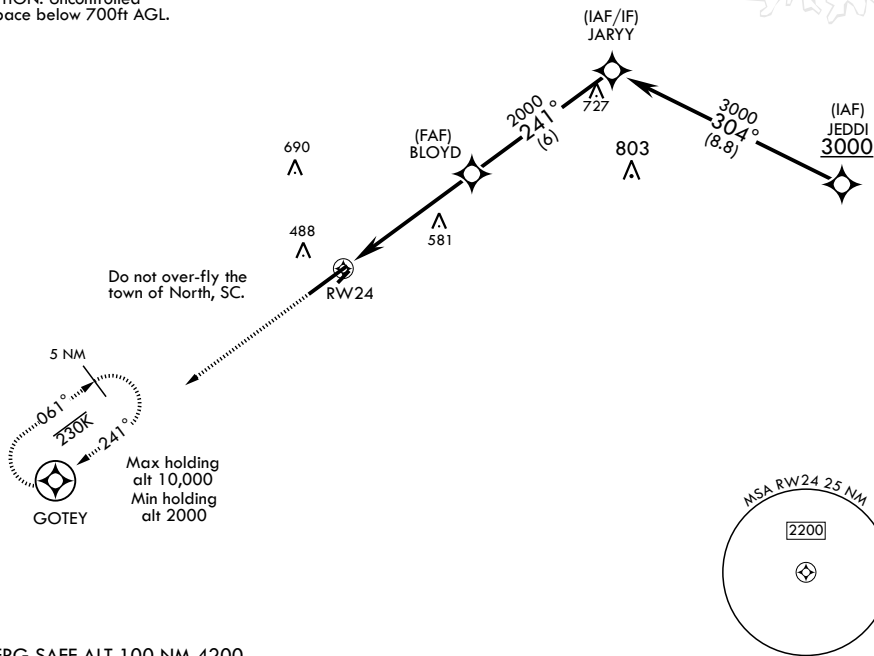
COLUMBIA APP CON/DEP CON
124.15 338.2

LZ/DZ OPS FAC
120.475 @ 235.775

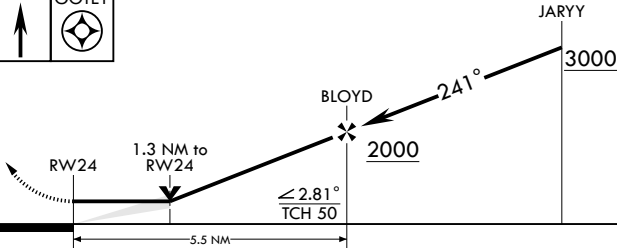
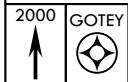
575

RNP APCH
DME/DME RNP-0.3 NA

CAUTION: Uncontrolled
airspace below 700ft AGL.



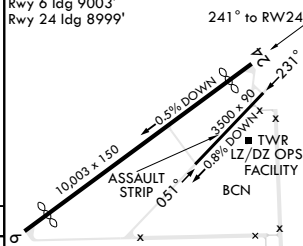
EMERG SAFE ALT 100 NM 4200



CATEGORY	A	B	C	D	E
LNAV MDA	760-1	444 (500-1)	760-1 $\frac{3}{8}$	444	(500-1 $\frac{3}{8}$)
C CIRCLING*	920-1	599 (600-1)	920-1 $\frac{1}{2}$ 599 (600-1 $\frac{1}{2}$)	1400-3	1079 (1100-3)

ELEV 321
Rwy 6 ldg 9003'
Rwy 24 ldg 8999'

TDZE 316

HIRL Rwy 6-24 **L**

NORTH, SOUTH CAROLINA

33°37'N - 81°05'W

NORTH AF AUX (KXNO)

Amdt 1 23APR20

RNAV (GPS) RWY 24

SE-2, 31 DEC 2020 to 28 JAN 2021