

APP CRS	Rwy Idg	<b>3328</b>
<b>033°</b>	TDZE	<b>9</b>
	Apt Elev	<b>11</b>

RNAV (GPS) RWY 3

MICHAEL J SMITH FIELD (MRH)

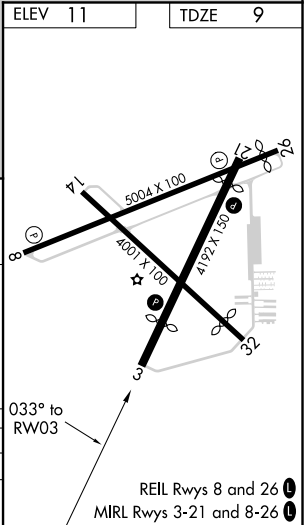
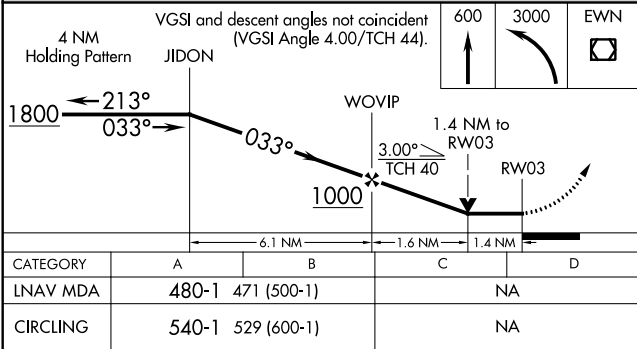
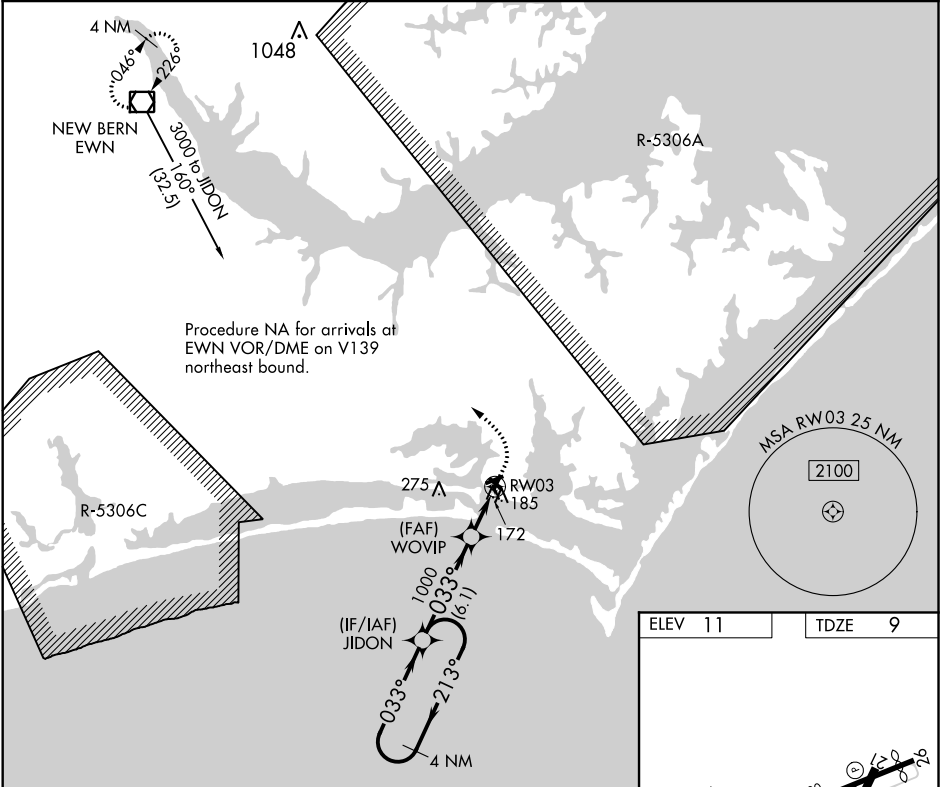
⚠

⚠

Circling Rwy 8, 14, 32 NA at night. DME/DME RNP-0.3 NA. ATC clearance required to penetrate R-5306A and R-5306C. When local altimeter setting not received, use Cherry Point MCAS altimeter setting and increase all MDA 40 feet. Rwy 3 helicopter visibility reduction below  $\frac{3}{4}$  SM NA. VDP NA when using Cherry Point MCAS altimeter setting. Rwy 8, 14, 32 helicopter visibility reduction below 1 SM NA.

MISSED APPROACH: Climb to 600 then climbing left turn to 3000 direct EWN VOR/DME and hold.

ASOS <b>135,375</b>	CHERRY POINT APP CON <b>124.1 268.7</b>	CLNC DEL <b>125.65</b>	UNICOM <b>122.8 (CTAF)</b> <b>0</b>
------------------------	--	---------------------------	--



SE-2, 31 DEC 2020 to 28 JAN 2021

SE-2, 31 DEC 2020 to 28 JAN 2021