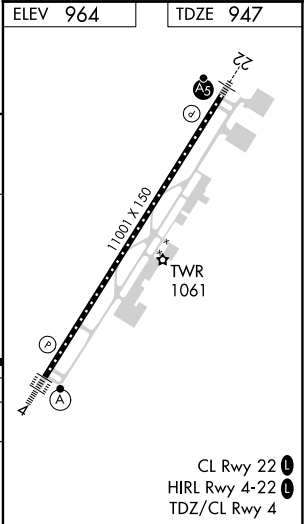
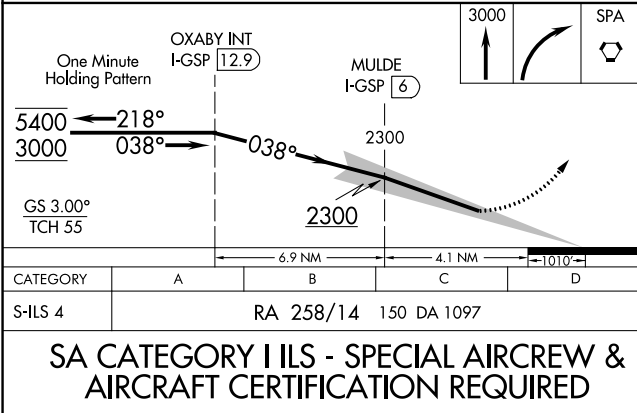
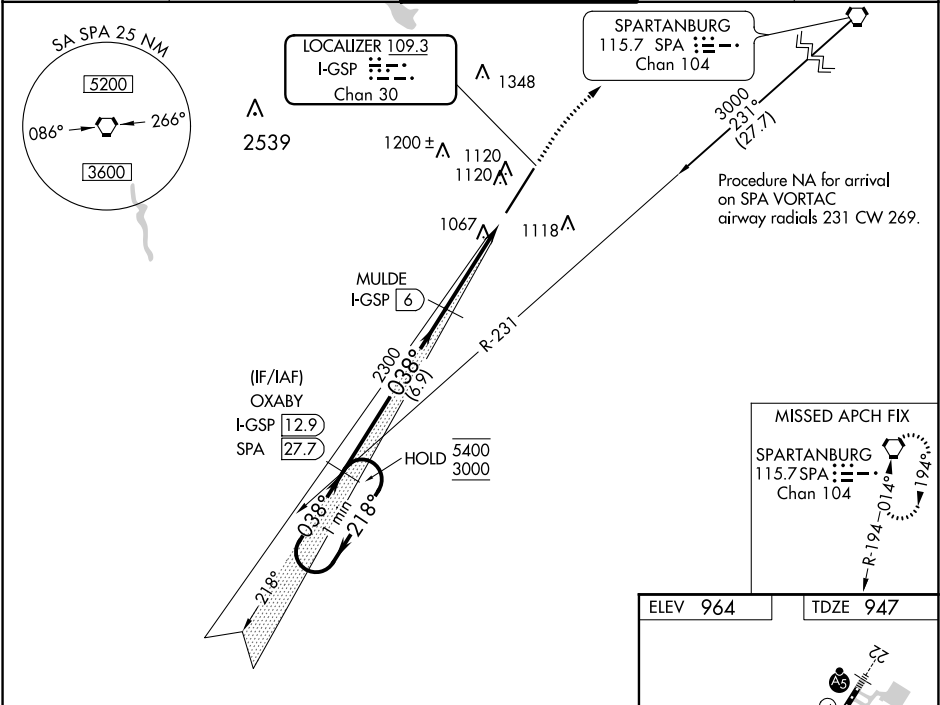


LOC/DME I-GSP	APP CRS	Rwy Idg
109.3	038°	11001
Chan 30		TDZE
		947
		Apt Elev
		964

ILS RWY 4 (SA CAT I)
GREENVILLE SPARTANBURG INTL (GSP)

DME required.	ALSF-2
Requires specific OPSPEC, MSPEC, or LOA approval and use of HUD to DH. Procedure NA when control tower closed.	MISSED APPROACH: Climb to 3000 then right turn direct SPA VORTAC and hold.

ATIS 134.25	GREER APP CON ★ 118.8 270.275	GREER TOWER ★ 120.1(CTAF) 251.15	GND CON 121.9	UNICOM 122.95
-----------------------	---	--	-------------------------	-------------------------



SE-2, 31 DEC 2020 to 28 JAN 2021

SE-2, 31 DEC 2020 to 28 JAN 2021