

WAAS CH 78103 W04A	APP CRS 038°	Rwy Idg 11001 TDZE 947 Apt Elev 964
--	------------------------	--

RNAV (GPS) RWY 4
GREENVILLE SPARTANBURG INTL (GSP)

RNP APCH.

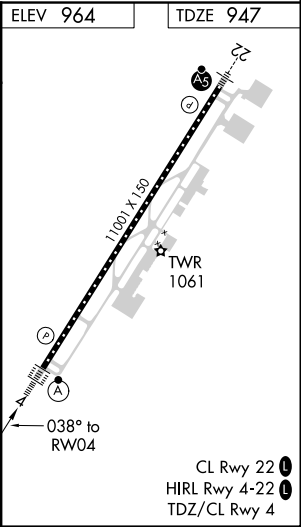
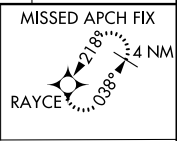
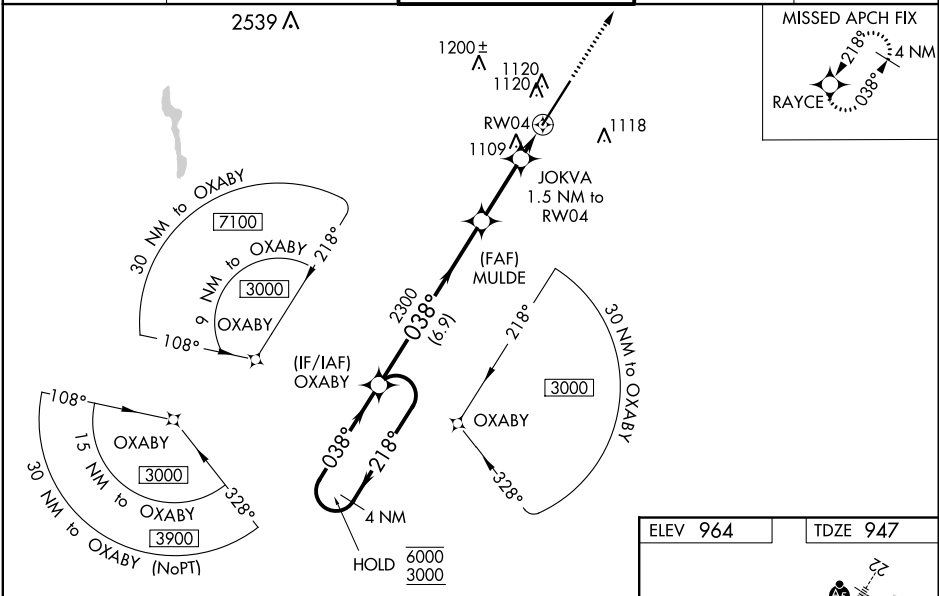
⚠ For uncompensated Baro-VNAV systems, LNAV/VNAV NA below -10°C or above 54°C. For inop ALS, increase LNAV/VNAV all Cats visibility to 1½ SM and increase LNAV Cat C/D visibility to RVR 6000. When local altimeter setting not received, use Greenville Downtown altimeter setting; increase LPV DA to 1176 feet and LNAV/VNAV DA to 1450 feet and all Cats visibility to RVR 5500; increase all MDAs 40 feet and visibility LNAV Cats C and D to RVR 4500 and Circling Cat D visibility ¼ SM. For inop ALS, when using Greenville Downtown altimeter setting, increase LNAV/VNAV all Cats visibility to 1½ SM. Baro-VNAV NA when using Greenville Downtown altimeter setting.

ALSF-2

ⓐ

MISSED APPROACH:
Climb to 3000 direct
RAYCE and hold.

ATIS 134.25	GREER APP CON★ 118.8 270.275	GREER TOWER★ 120.1 (CTAF) 0 251.15	GND CON 121.9	UNICOM 122.95
-----------------------	--	---	-------------------------	-------------------------



SE-2, 31 DEC 2020 to 28 JAN 2021

SE-2, 31 DEC 2020 to 28 JAN 2021