

LOC/DME I-SMS  
**109.35**  
Chan **30** (Y)

APP CRS  
**230°**

Rwy Idg  
TDZE **182**  
Apt Elev **182**

5501

**ILS or LOC RWY 23**

SUMTER (SMS)

DME required.

Circling NA to Rwy 14 and 32.  
Inop table does not apply to SHLS 23 all Cats.

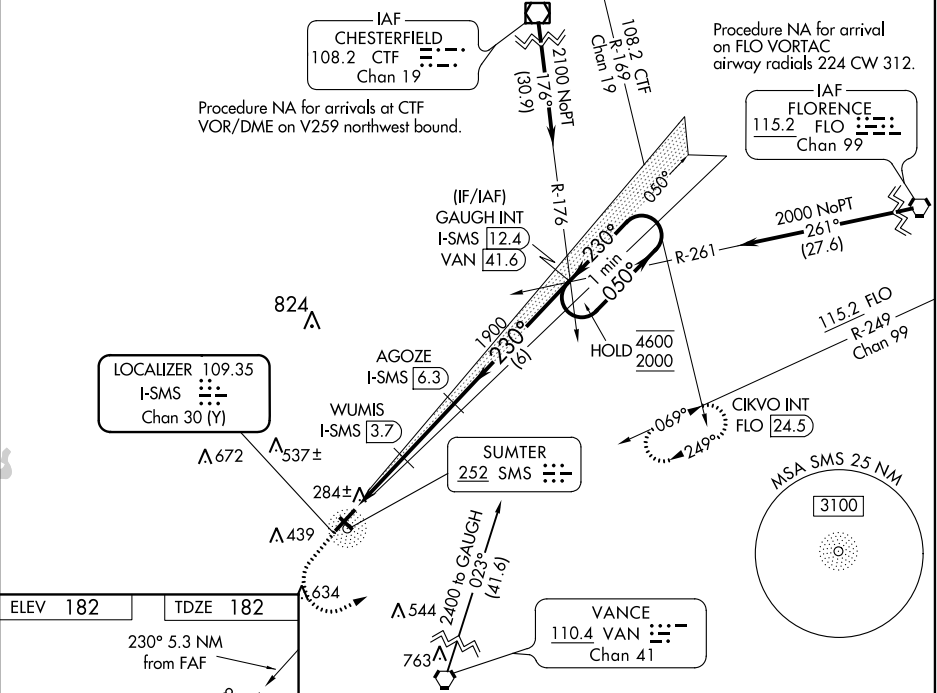
ODALS

MISSED APPROACH: Climb to 700 then climbing left turn to 2000 on heading 040° and FLO VORTAC R-249 to CIKVO INT/FLO 24.5 DME and hold.

AWOS-3  
**118.075**

SHAW APP CON ★  
**125.4**

UNICOM  
**122.7** (CTAF) **0**



ELEV 182

TDZE 182

230° 5.3 NM from FAF

1

2

3

4

5

700

2000

hdg 040°

FLO R-249

CIKVO INT

One Minute Holding Pattern

\*LOC only.

\*I-SMS 2.1

WUMIS I-SMS 3.7

AGOZE I-SMS 6.3

GAUGH I-SMS 12.4

1900

050°

4600

230°

2000

GS 3.00° TCH 44

1 NM

1.6 NM

2.7 NM

6 NM

CATEGORY	A	B	C	D
S-ILS 23		382-¾	200 (200-¾)	
S-LOC 23	540-¾	358 (400-¾)	540-⅞	358 (400-⅞)
CIRCLING	600-1 418 (500-1)	680-1 498 (500-1)	1000-2½ 818 (900-2½)	1000-2¾ 818 (900-2¾)