

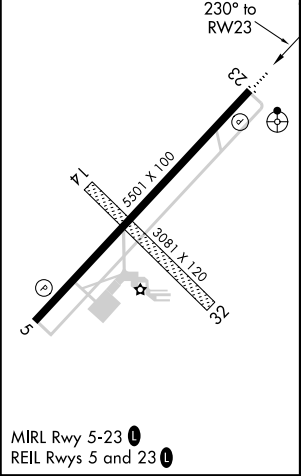
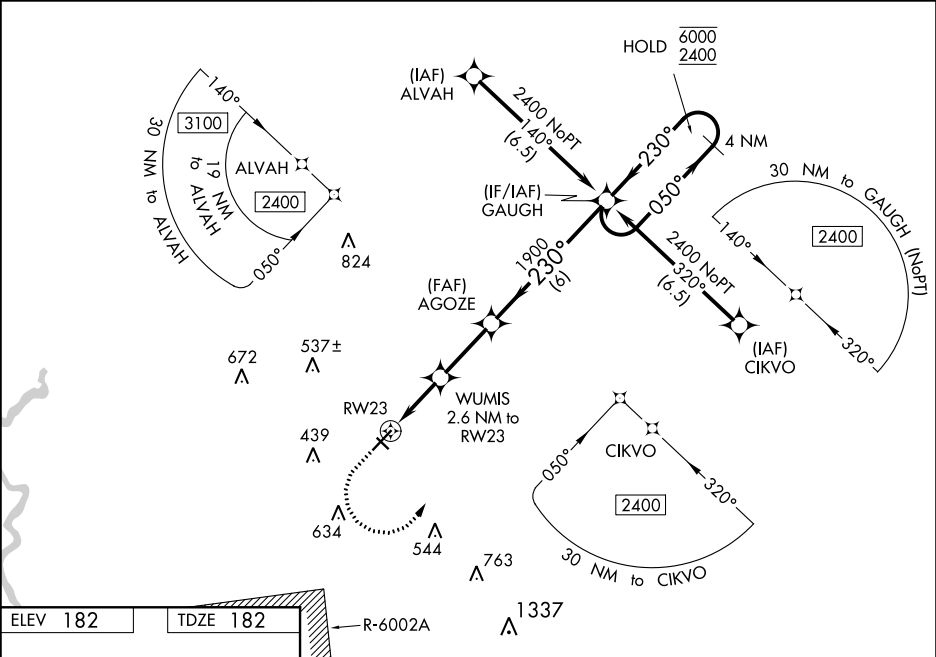
WAAS CH <b>58141</b>	APP CRS <b>230°</b>	Rwy Idg TDZE <b>182</b>	<b>5501</b>
<b>W23A</b>		Apt Elev <b>182</b>	

RNAV (GPS) RWY 23

SUMTER (SMS)

RNP APCH.	ODALS	MISSED APPROACH: Climb to 600 then climbing left turn to 2400 direct GAUGH and hold.
<div><div>⚠</div><div>Circling NA to Rwy 14 and 32. For uncompensated Baro-VNAV systems, LNAV/VNAV NA below -15°C or above 54°C. Inop table does not apply to LPV all Cats. For inop ALS increase LNAV/VNAV Cat A/B visibility to 7/5 SM.</div></div>	<div><div>📶</div><div>⋮</div></div>	

AWOS-3 <b>118.075</b>	SHAW APP CON★ <b>125.4</b>	UNICOM <b>122.7 (CTAF) 0</b>
--------------------------	-------------------------------	---------------------------------



600 ↑		2400 ↖		GAUGH ✦		4 NM Holding Pattern	
*LNAV only.		WUMIS 2.6 NM to RW23		AGOZE 1900		GAUGH	
RW23 ↙ *1 NM to RW23		1040*		230°		050° → 6000 ← 230° 2400	
1 NM		1.6 NM		2.7 NM		6 NM	
CATEGORY		A		B		C	
LPV DA		382-3/4		200 (200-3/4)			
LNAV/VNAV DA		460-3/4		278 (300-3/4)			
LNAV MDA		540-3/4 358 (400-3/4)		540-7/8 358 (400-7/8)			
CIRCLING		600-1 418 (500-1)		680-1 498 (500-1)		1000-2 1/2 818 (900-2 1/2)	
						1000-2 3/4 818 (900-2 3/4)	