

NDB AIK	APP CRS	Rwy Idg	5500
347	225°	TDZE	515
		Apt Elev	529

NDB RWY 25
AIKEN RGNL (AIK)

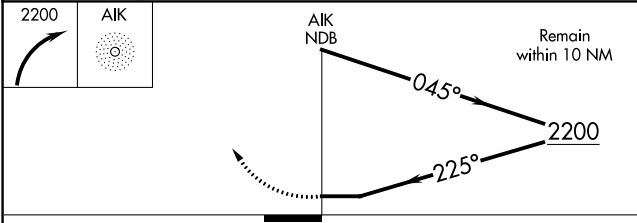
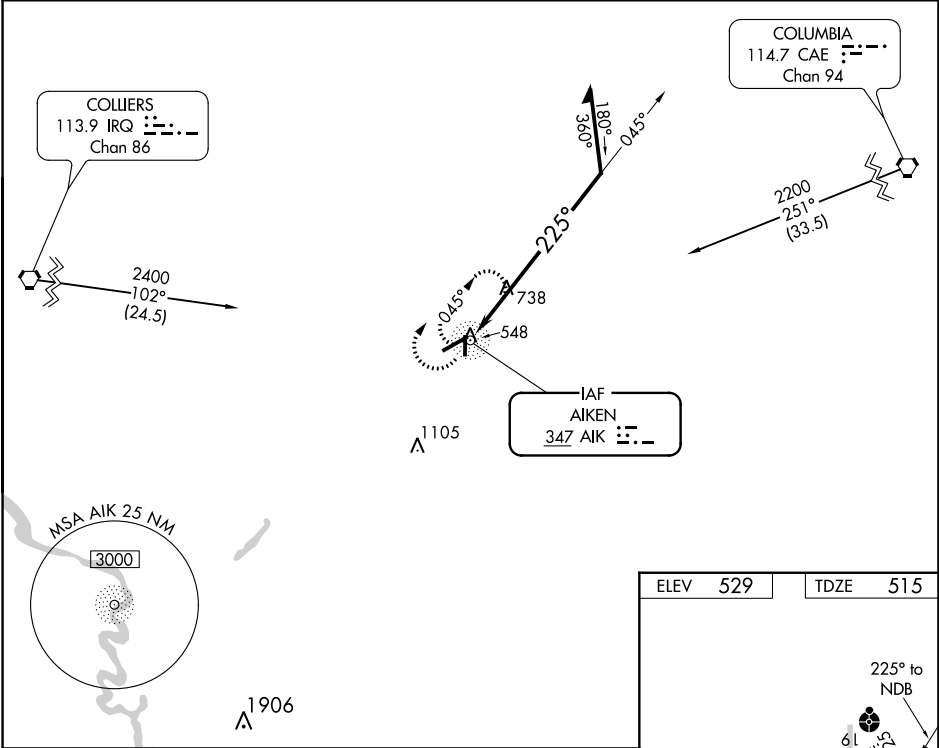
NA

When local altimeter setting not received, use Augusta Rgnl at Bush Field altimeter setting and increase all MDA 120 feet and S-25 Cat B/C/D and Circling Cat B visibility ¼ mile, Circling Cat C ½ mile and Circling Cat D ½ mile. For inop ODALS, increase S-25 Cat C/D visibility to 1 ½ mile. For inop ODALS when using Augusta Rgnl at Bush Field altimeter setting, increase S-25 Cat C/D visibility to 2 ½ mile. Helicopter visibility reduction below ¾ SM NA.

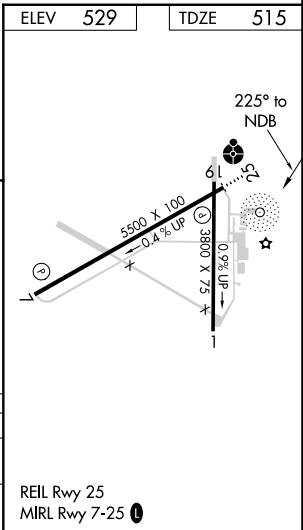
ODALS

MISSED APPROACH: Climbing right turn to 2200 in AIK NDB holding pattern.

AWOS-3 118.025	AUGUSTA APP CON ★ 119.15 284.625	CLNC DEL 126,075	UNICOM 122.8 (CTAF) 0
-------------------	-------------------------------------	---------------------	--------------------------



CATEGORY	A	B	C	D
S-25	1180-3/4	665 (700-3/4)	1180-1 3/4	665 (700-1 3/4)
CIRCLING	1180-1	651 (700-1)	1180-1 7/8	1180-2
			651 (700-1 7/8)	651 (700-2)



SE-2, 31 DEC 2020 to 28 JAN 2021

SE-2, 31 DEC 2020 to 28 JAN 2021