

WAAS CH 50301 W25A	APP CRS 246°	Rwy Idg TDZE Apt Elev	5500 515 529
--	------------------------	-----------------------------	---

RNAV (GPS) RWY 25

AIKEN RGNL (AIK)

RNP APCH.

▽

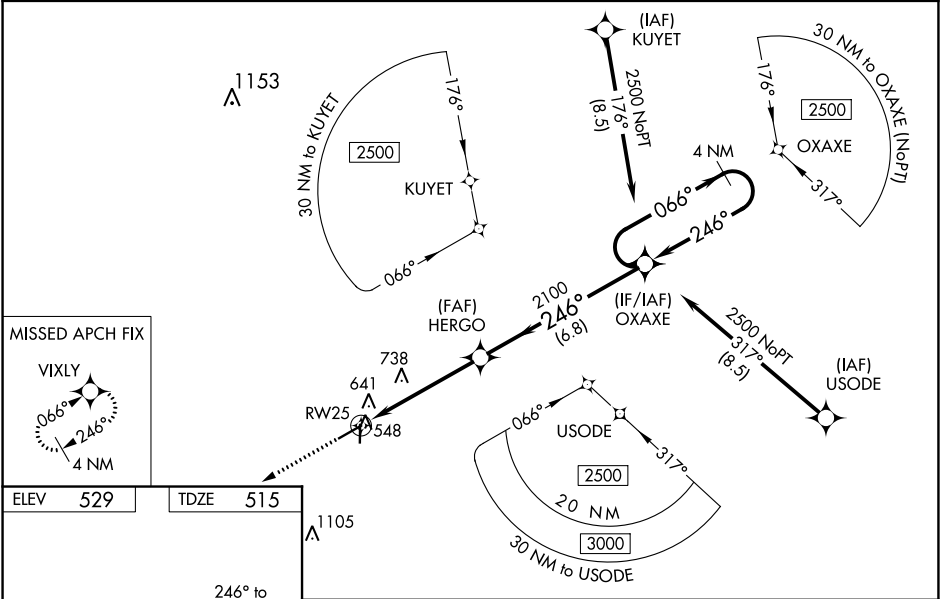
NA

Baro-VNAV NA when using Augusta Rgnl at Bush Field altimeter setting.
For uncompensated Baro-VNAV systems, LNAV/VNAV NA below -16°C or above 40°C. VDP NA with Augusta Rgnl at Bush Field altimeter setting.
When local altimeter setting not received, use Augusta Rgnl at Bush Field altimeter setting: increase LPV all Cats DA to 869 feet, LNAV/VNAV all Cats DA to 927 feet and all visibilities ¾ mile; increase all MDA 120 feet and Cat C/D visibilities ½ mile. For inop ODALS, increase LPV all Cats visibility to ¾ mile, LNAV/VNAV all Cats to 1 ½ mile and LNAV Cat C/D to 1 ¼ mile. For inop ODALS when using Augusta Rgnl at Bush Field altimeter setting, increase LPV all Cats visibility to 1 ¼ mile, LNAV/VNAV all Cats to 1 ½ mile and LNAV Cat D to 1 ½ mile.

ODALS

MISSED APPROACH:
Climb to 3000 direct
VIXLY and hold.

AWOS-3 118.025	AUGUSTA APP CON * 119.15 284.625	CLNC DEL 126.075	UNICOM 122.8 (CTAF)
--------------------------	--	----------------------------	-------------------------------



ELEV 529 TDZE 515

3000

VIXLY

VGSI and RNAV glidepath not coincident
(VGSI Angle 3.00/TCH 27).

*LNAV only.

HERGO

2100

2100

246°

246°

OXAXE

066°

2500

1.3

3.6 NM

6.8 NM

GP 3.00°

TCH 45

REIL Rwy 25

MIRL Rwy 7-25

CATEGORY	A	B	C	D
LPV DA	765-¾ 250 (300-¾)			
LNAV/VNAV DA	823-1 308 (300-1)			
LNAV MDA	940-¾ 425 (500-¾)		940-1⅛ 425 (500-1⅛)	

AIKEN, SOUTH CAROLINA

Amtd 1E 07NOV19

33°39'N-81°41'W

AIKEN RGNL (AIK)

RNAV (GPS) RWY 25