

VORTAC IRQ <b>113.9</b> Chan <b>86</b>	APP CRS <b>102°</b>	Rwy Idg TDZE Apt Elev	<b>N/A</b> <b>N/A</b> <b>528</b>
--	------------------------	-----------------------------	--

VOR/DME-A  
AIKEN RGNL(AIK)

**T**  
**A** NA

When local altimeter setting not received, use Augusta Rgnl at Bush Field altimeter setting and increase all MDA 120 feet and increase Cat D visibility  $\frac{1}{4}$  mile.

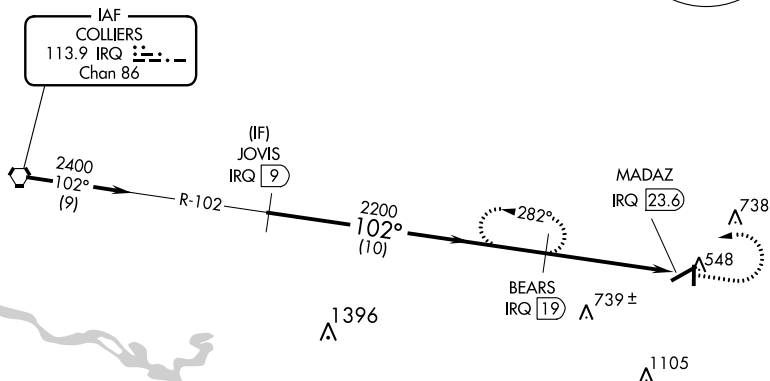
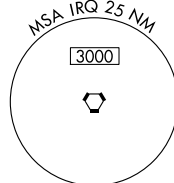
**MISSED APPROACH:** Climb to 1600 then climbing left turn to 2400 on IRQ VORTAC R-102 to BEARS/IRQ 19 DME and hold.

AWOS-3  
118.025

AUGUSTA APP CON ★  
119.15 284.625

CLNC DEL  
**126.075**UNICOM  
122.8 (CTAF) **L**

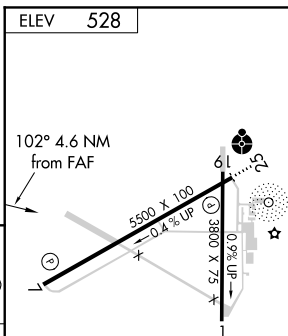
Procedure NA for arrivals at IRQ VORTAC  
on airway radials 062 CW 154.



The diagram illustrates the orbits of the four Galilean moons of Jupiter. The top table provides orbital data for each moon, and the bottom diagram shows their relative positions and distances from Jupiter.

CATEGORY	A	B	C	D
CIRCLING	980-1 452 (500-1)	1000-1¼ 472 (500-1¼)	1000-1½ 472 (500-1½)	1080-2 552 (600-2)

The diagram shows Jupiter at the center with four moons orbiting it. The moons are labeled JOVIS, BEARS, MADAZ, and BEARS. The distances from Jupiter are 10 NM and 4.6 NM. The angle between the orbits is 102°. The diagram also shows the relative positions of the moons and their distances from each other.



REIL Rwy 25  
MIRL Rwy 7-25 **L**