

LOC/DME I-ETI 110.7 Chan 44	APP CRS 091°	Rwy ldg 5350 TDZE 19 Apt Elev 19
---	------------------------	---

ILS or LOC RWY 9

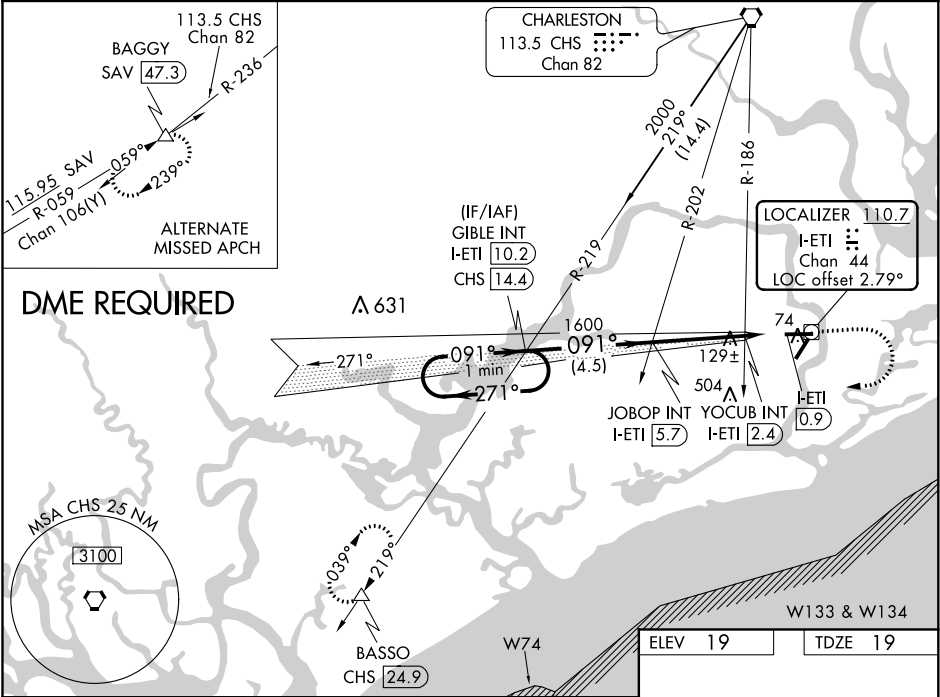
CHARLESTON EXECUTIVE (JZI)

▼ DME required. Helicopter visibility reduction below ¾ SM NA. When local altimeter setting not received, use Charleston AFB/Intl altimeter setting and increase DA 32 feet and all MDAs 40 feet, increase S-ILS all Cats visibility ½ mile and S-LOC Cat C and D visibility ¼ mile and S-LOC YOCUB Fix Minimum Cat C and D visibility ¼ mile. VDP NA when using Charleston AFB/Intl altimeter setting.

▲

MISSED APPROACH: Climb to 1000 then climbing right turn to 3000 on heading 272° and on CHS VORTAC R-219 to BASSO/CHS 24.9 DME and hold.

AWOS-3 123.775	CHARLESTON APP CON 120.7 306.925	CLNC DEL 119.85	UNICOM 122.8 (CTAF)
--------------------------	--	---------------------------	-------------------------------



One Minute Holding Pattern	GIBLE INT I-ETI 10.2		JOBOP INT I-ETI 5.7		<div><div>1000</div><div>3000</div><div>hdg 272°</div></div>		CHS R-219	BASSO △
	1700 ← 271° 091° →		1600		YOCUB INT I-ETI 2.4 *I-ETI 1.9		*LOC only	
GS 3.00° TCH 51	1600		*520		I-ETI 0.9			
		4.5 NM		3.3 NM		0.5 NM		1 NM
CATEGORY	A		B		C		D	
S-ILS 9			275-¾		256 (300-¾)			
S-LOC 9	520-1		501 (600-1)		520-1½		501 (600-1½)	
CIRCLING	520-1		501 (600-1)		520-1½ 501 (600-1½)		580-2 561 (600-2)	
YOCUB FIX MINIMUMS (DUAL VOR RECEIVERS or DME REQUIRED)								
S-LOC 9	380-1		361 (400-1)		380-1½		361 (400-1½)	
CIRCLING	440-1 421 (500-1)		480-1 461 (500-1)		480-1½ 461 (500-1½)		580-2 561 (600-2)	

ELEV 19	TDZE 19
091° 4.8 NM from FAF	
5350 X 100	
4313 X 150	
MIRL Rwy 4-22	
HIRL Rwy 9-27	
FAF to MAP 4.8 NM	
Knots	60 90 120 150 180
Min:Seq	4:48 3:12 2:24 1:55 1:36