

LOC/DME I- <b>UZA</b>	APP CRS	Rwy ldg	<b>5500</b>
<b>108.5</b>	<b>016°</b>	TDZE	<b>666</b>
Chan <b>22</b>		Apt Elev	<b>666</b>

ILS Y or LOC Y RWY 2

ROCK HILL/YORK COUNTY/BRYANT FIELD (UZA)

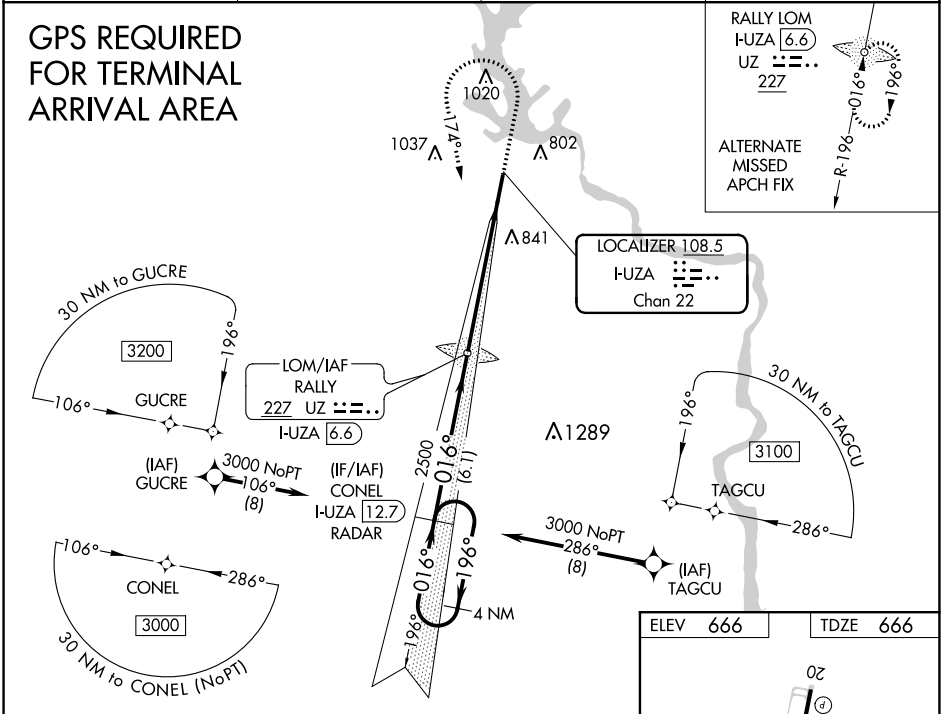
**V** ADF or DME required. VDP NA with Charlotte/Douglas Intl altimeter setting.

**NA** When local altimeter setting not received, use Charlotte/Douglas Intl altimeter setting and increase all DA 45 feet and all MDA 60 feet. Increase S-LOC 2 Cat C/D visibility ¼ mile. For inop MALSR, increase S-LOC 2 Cat C/D visibility to 1½ mile. For inop MALSR, when using Charlotte/Douglas Intl altimeter setting, increase S-LOC 2 Cat C/D visibility to 1½ mile.

MALSR

MISSED APPROACH: Climb to 1500 then climbing left turn to 3000 on heading 174° and CLT VOR/DME R-203 to CONEL/I-**UZA** 12.7 DME/RADAR and hold.

ASOS <b>120.775</b>	CHARLOTTE APP CON <b>120.05 307.8</b>	CLNC DEL <b>126.85</b>	UNICOM <b>123.05 (CTAF) 0</b>
------------------------	--	---------------------------	----------------------------------



4 NM Holding Pattern		CONEL I-UZA <b>12.7</b> RADAR		RALLY LOM I-UZA <b>6.6</b>		1500 ↑		3000 ↷		hdg 174° CLT R-203		CONEL I-UZA <b>12.7</b> RADAR		
3000		←196°		016°→		016°		2500		*I-UZA <b>2.3</b>		*I-UZA <b>1.1</b>		
GS 3.00° TCH 41										*LOC only.				
		6.1 NM		4.3 NM		1.2 NM								
CATEGORY	A		B		C		D							
S-ILS 2			866-½		200 (200-½)									
S-LOC 2	1080-½		414 (500-½)		1080-¾		414 (500-¾)							
CIRCLING	1140-1 474 (500-1)		1160-1 494 (500-1)		1340-2 674 (700-2)		1340-2¼ 674 (700-2¼)							
FAF to MAP 5.5 NM														
Knots		60	90	120	150	180								
Min:Sec		5:30	3:40	2:45	2:12	1:50								

5500 X 100

016° 5.5 NM from FAF

MIRL Rwy 2-20