

WAAS
CH **70425**
W02A

APP CRS
016°

Rwy Idg **5500**
TDZE **666**
Apt Elev **666**

RNAV (GPS) RWY 2

ROCK HILL/YORK COUNTY/BRYANT FIELD (UZA)

▼

▲

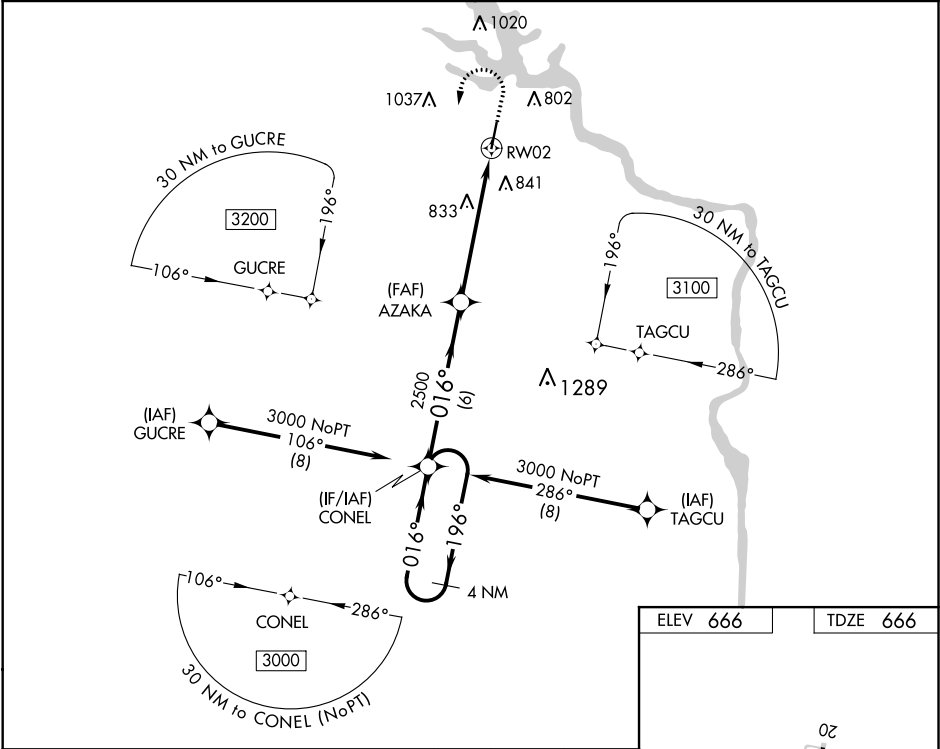
Baro-VNAV and VDP NA when using Charlotte/Douglas Intl altimeter setting. For uncompensated Baro-VNAV systems, LNAV/VNAV NA below -9°C (16°F) or above 54°C (130°F). DME/DME RNP-0.3 NA. When local altimeter setting not received, use Charlotte/Douglas Intl altimeter setting and increase all DA 45 feet and all MDA 60 feet. Increase LNAV/VNAV all Cats visibility ¼ mile and LNAV Cat C/D visibility ¼ mile.

MALSR

MISSED APPROACH:

Climb to 1600 then climbing left turn to 3000 direct CONEL and hold.

ASOS 120.775	CHARLOTTE APP CON 120.05 307.8	CLNC DEL 126.85	UNICOM 123.05 (CTAF) 0
------------------------	--	---------------------------	----------------------------------



4 NM Holding Pattern		CONEL		1600	3000	CONEL
3000		196° 016°		2500	*1.2 NM to RW02	
GP 3.00° TCH 41		016°		2500	*LNAV only.	
		6 NM		4.4 NM	1.2 NM	
CATEGORY	A	B	C	D		
LPV DA	866-1/2		200 (200-1/2)			
LNAV/ VNAV DA	1022-3/4		356 (400-3/4)			
LNAV MDA	1100-1/2	434 (500-1/2)	1100-3/4	434 (500-3/4)		
CIRCLING	1140-1 474 (500-1)	1160-1 494 (500-1)	1340-2 674 (700-2)	1340-2 1/4 674 (700-2 1/4)		

