

WAAS CH <b>86904</b> <b>W23A</b>	APP CRS <b>230°</b>	Rwy Idg TDZE <b>185</b> Apt Elev <b>192</b>
--	------------------------	---

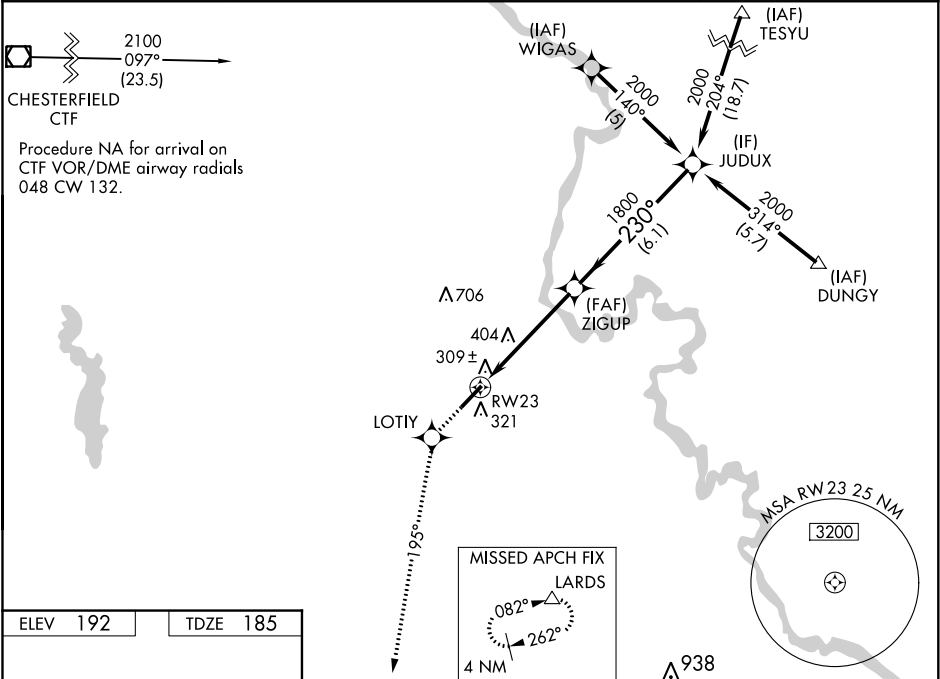
RNAV (GPS) RWY 23

DARLINGTON COUNTY (UDG)

▼ For uncompensated Baro-VNAV systems, LNAV/VNAV NA below -1.5°C (5°F) or above 48°C (118°F). When local altimeter setting not received, use Florence altimeter setting and increase LPV DA to 527, LNAV/VNAV DA to 627, and all MDA 60 feet; increase LPV all Cats visibility ¼ mile. DME/DME RNP-0.3 NA. Helicopter visibility reduction below ¾ SM NA. Baro-VNAV NA when using Florence altimeter setting.

MISSED APPROACH: Climb to 2000 direct LOTIY and via 195° track to LARDS and hold.

AWOS-3PT <b>119.925</b>	FLORENCE APP CON ★ <b>118.6 341.7</b>	CLNC DEL <b>118.55</b>	UNICOM <b>123.0 (CTAF) 0</b>
----------------------------	--	---------------------------	---------------------------------



ELEV 192	TDZE 185
----------	----------

230° to RW23

5500 X 100

MIRL Rwy 5-23 0

REIL Rwys 5 and 23 0

2000	LOTIY	tr 195°	LARDS	JUDUX
*LNAV only.				
*1.5 NM to RW23				
1.5	3.4 NM	6.1 NM	2000	
Procedure Turn NA				
GP 3.00° TCH 40				
CATEGORY	A	B	C	D
LPV DA	479-1 294 (300-1)			
LNAV/VNAV DA	579-1½ 394 (400-1½)			
LNAV MDA	700-1 515 (600-1)	700-1½ 515 (600-1½)	700-1¾ 515 (600-1¾)	
CIRCLING	700-1 508 (600-1)	700-1½ 508 (600-1½)	760-2 568 (600-2)	