

LOC I-MEB
110.7

APP CRS
054°

Rwy ldg
TDZE
Apt Elev
6502
216
216

ILS or LOC RWY 5

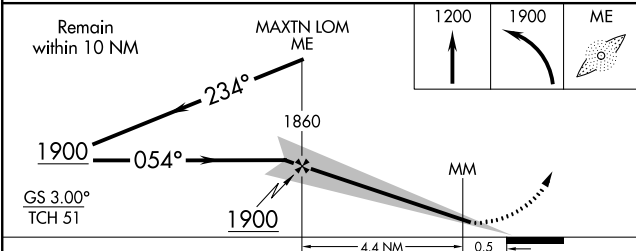
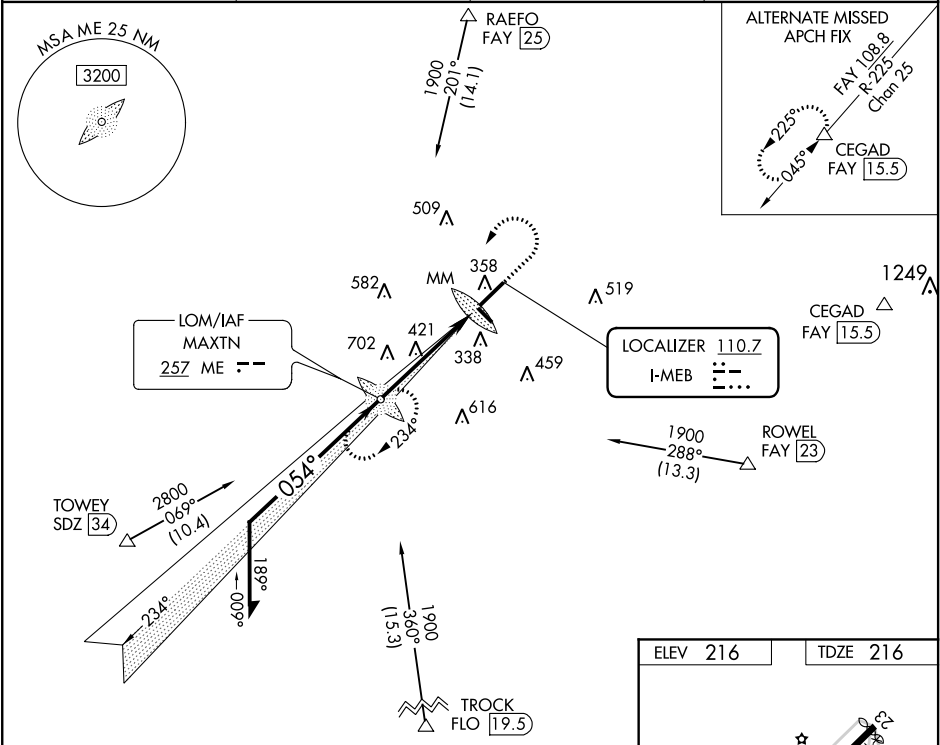
Laurinburg-Maxton (MEB)

ADF required for procedure entry.
ADF required.

MALSR

MISSED APPROACH: Climb to 1200 then climbing left turn to 1900 direct MAXTN LOM and hold.

ASOS 134.125	FAYETTEVILLE APP CON 127.8 343.725	GCO 135.075	UNICOM 122.8 (CTAF) 0
------------------------	--	-----------------------	---------------------------------



CATEGORY	A	B	C	D
S-ILS 5	416-1/2		200 (200-1/2)	
S-LOC 5	680-1/2 464 (500-1/2)		680-1 464 (500-1)	
CIRCLING	740-1 524 (600-1)		780-1 1/2 564 (600-1 1/2)	

