

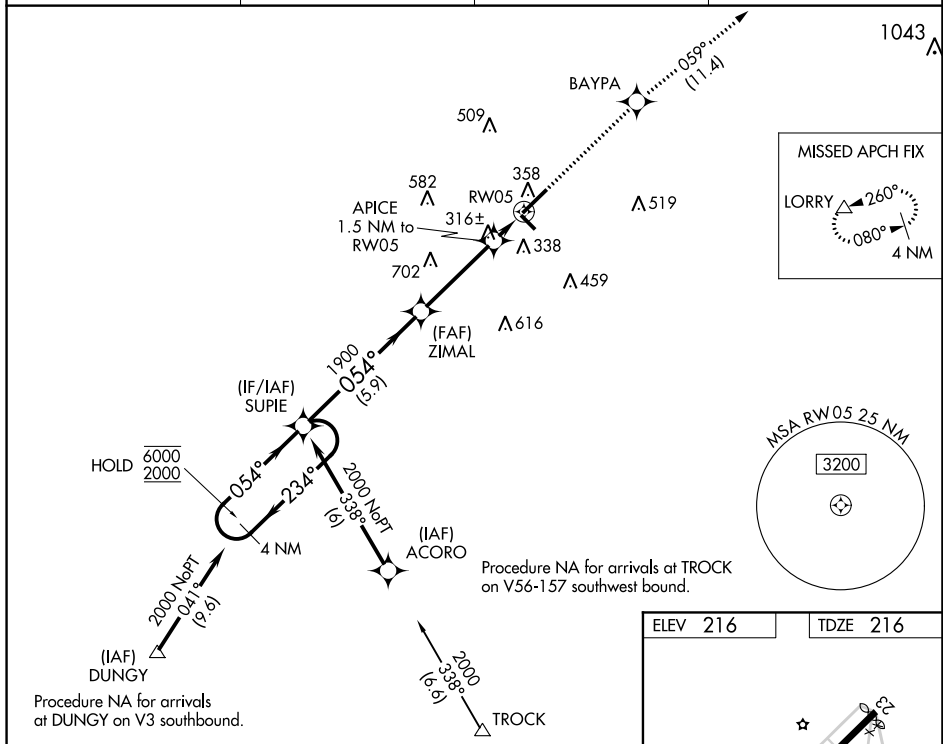


WAAS CH 90423 W05A	APP CRS 054°	Rwy Idg 6502 TDZE 216 Apt Elev 216
--	------------------------	---

RNAV (GPS) RWY 5

RNP APCH.		<div>MALSR</div> <div></div>	MISSED APPROACH: Climb to 2400 direct BAYPA and on track 059° to LORRY and hold.
<div><div><div>T</div><div>A</div></div></div>	Circling to Rwy 13 and 31 NA at night. For uncompensated Baro-VNAV systems, LNAV/VNAV NA below -15°C or above 42°C. For inop ALS, increase LNAV/VNAV all Cats visibility to ¾ SM, and LNAV Cat C/D visibility to 1 SM.		
ASOS 134.125	FAYETTEVILLE APP CON 127.8 343.725	GCO 135.075	UNICOM 122.8 (CTAF) 

[illegible]