

AWOS-3
118.175
CLNC DEL
127.35
UNICOM (CTAF)
122.725
CHARLOTTE DEP CON
128.325 307.8

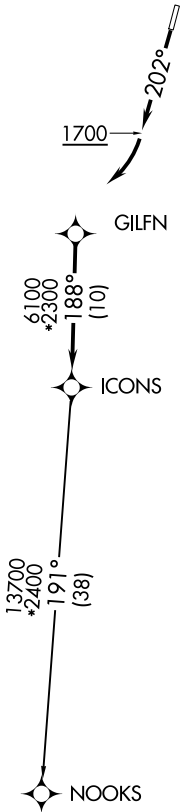
TOP ALTITUDE:
3000

TAKEOFF MINIMUMS

Rwy 2: Standard.
Rwy 20: 400-2¾ or standard with minimum climb of 205' per NM to 1300, or alternatively, with standard takeoff minimums and a normal 200' per NM climb gradient, takeoff must occur no later than 1200' prior to DER.

- NOTE: For turbojets only.
NOTE: DME/DME/IRU or GPS required.
NOTE: RNAV 1.
NOTE: RADAR required.
NOTE: If unable to accept climb rates, advise ATC on initial contact.
NOTE: Upon reaching 10000 MSL, accelerate to and maintain 280K, if unable advise ATC.
NOTE: Transponder code will be issued via PDC or Charlotte CLNC DEL.

NOTE: Chart not to scale.



DEPARTURE ROUTE DESCRIPTION

TAKEOFF RWY 20: Climb heading 202° to 1700 before turning right.

Climb on heading assigned by ATC, expect RADAR vectors to GILFN, then on track 188° to ICONS. Then on NOOKS transition. Maintain 3000, expect filed altitude within 10 minutes after departure.

NOOKS TRANSITION (ICONS4.NOOKS)

SE-2, 31 DEC 2020 to 28 JAN 2021

SE-2, 31 DEC 2020 to 28 JAN 2021