

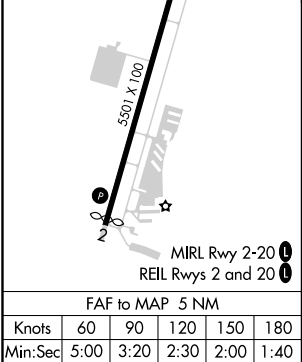
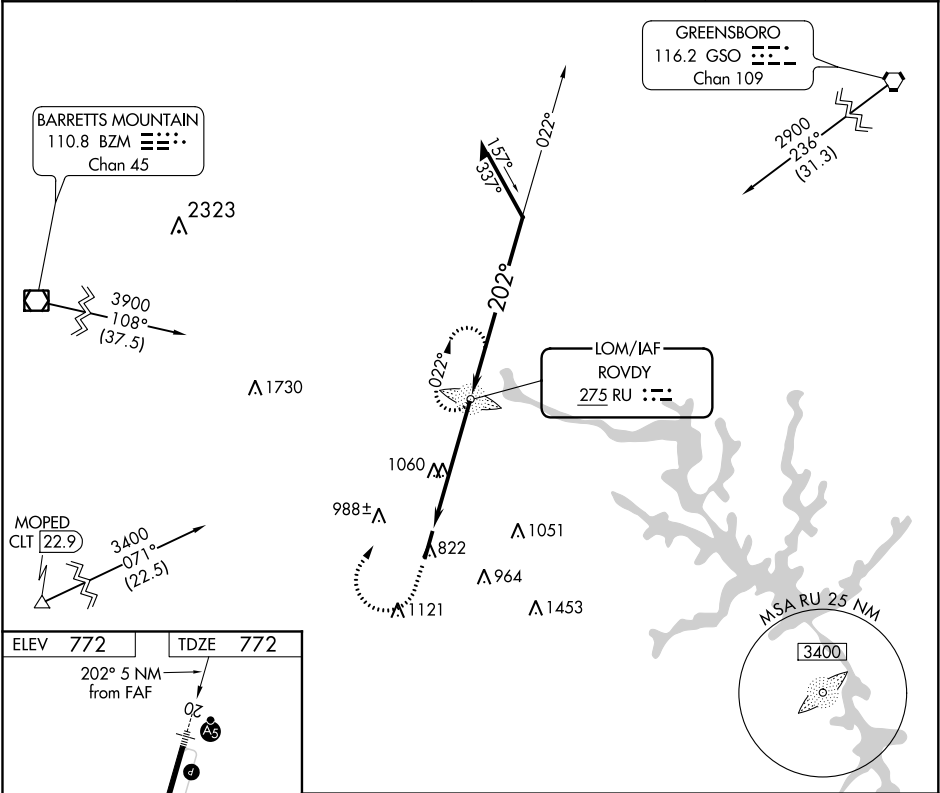
LOM RU 275	APP CRS 202°	Rwy Idg TDZE Apt Elev 5501 772 772	NDB RWY 20 MID-CAROLINA RGNL (RUQ)
----------------------	------------------------	--	--

When local alimeter setting not received, use Lexington alimeter setting and increase all MDA 40 feet, increase S-20 Cats C and D, and Circling Cat C visibility ¼ SM and Circling Cat D ¼ SM. For inop ALS, increase Cat D visibility to 1⅞ SM. For inop ALS when using Lexington alimeter setting increase Cat D visibility to 2 SM.



MISSED APPROACH:
Climb to 1800 then climbing right turn to 2500 direct ROVDY LOM and hold.

AWOS-3 118.175	CHARLOTTE APP CON 128.325 307.8	CLNC DEL 127.35	UNICOM 122.725 (CTAF)
--------------------------	---	---------------------------	---------------------------------



1800	2500	RU	ROVDY RU LOM	6000	022°	Remain within 10 NM
				2500	202°	2500
				3.20°	TCH 39	
				5 NM		
CATEGORY	A	B	C	D		
S-20	1420-¾ 648 (700-¾)		1420-1⅝ 648 (700-1⅝)			
CIRCLING	1420-1 648 (700-1)		1440-1⅞ 668 (700-1⅞)	1440-2 668 (700-2)		