

WAAS CH <b>42521</b> <b>W20A</b>	APP CRS <b>202°</b>	Rwy Idg TDZE <b>772</b> Apt Elev <b>772</b>
--	------------------------	---

**RNAV (GPS) RWY 20**  
MID-CAROLINA RGNL (RUQ)

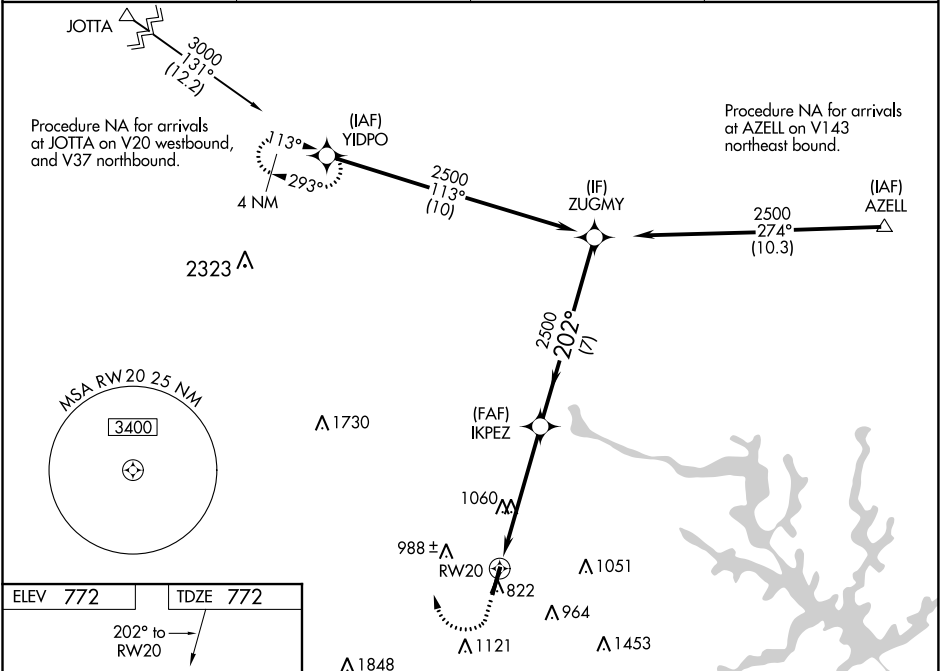
**⚠** For uncompensated Baro-VNAV systems, LNAV/VNAV NA below -16° C (4°F) or above 39°C (102°F). DME/DME RNP-0.3 NA. When local altimeter setting not received, use Lexington altimeter setting and increase all DA 37 feet and all MDA 40 feet, increase LNAV Cat C and D visibility 1/8 SM and Circling Cat C visibility 1/8 SM and Circling Cat D 1/4 SM. For inop ALS when using Lexington altimeter setting, increase LNAV Cat C and D visibility to 1 3/4 SM. VDP and Baro-VNAV NA when using Lexington altimeter setting. For inop ALS, increase LNAV/VNAV visibility to 1/8 SM all Cats.

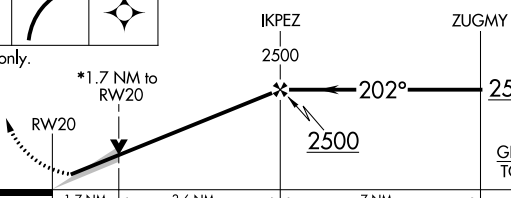
**MALSR**

**AS**

**MISSED APPROACH:**  
Climb to 2100 then climbing right turn to 3400 direct YIDPO and hold.

AWOS-3 <b>118.175</b>	CHARLOTTE APP CON <b>128,325 307.8</b>	CLNC DEL <b>127.35</b>	UNICOM <b>122.725 (CTAF)</b> <b>1</b>
--------------------------	---	---------------------------	--



2100 ↑		3400 ↗		YIDPO ✦					
*LNAV only.									
									
CATEGORY		A		B		C		D	
LPV DA		972-½		200 (200-½)					
LNAV/VNAV DA		1032-½		260 (300-½)					
LNAV MDA		1360-½ 588 (600-½)		1360-¼ 588 (600-1¼)					
CIRCLING		1360-1 588 (600-1)		1440-1¾ 668 (700-1¾)		1440-2 668 (700-2)			