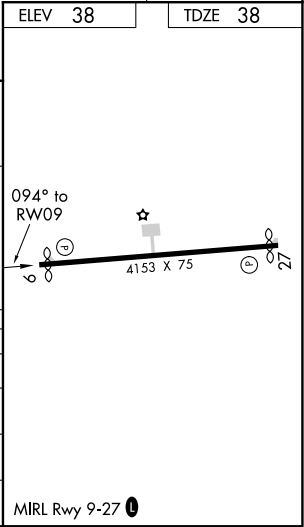
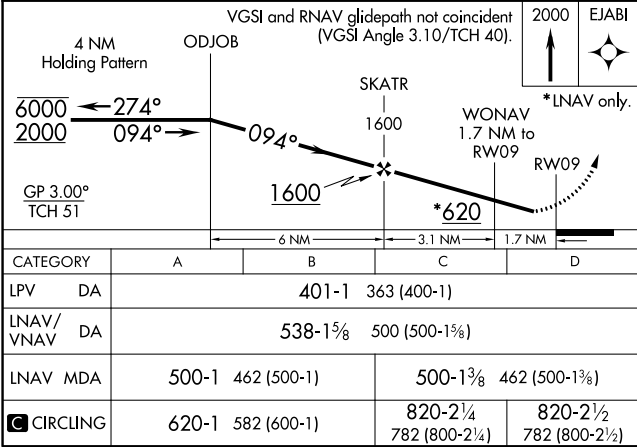
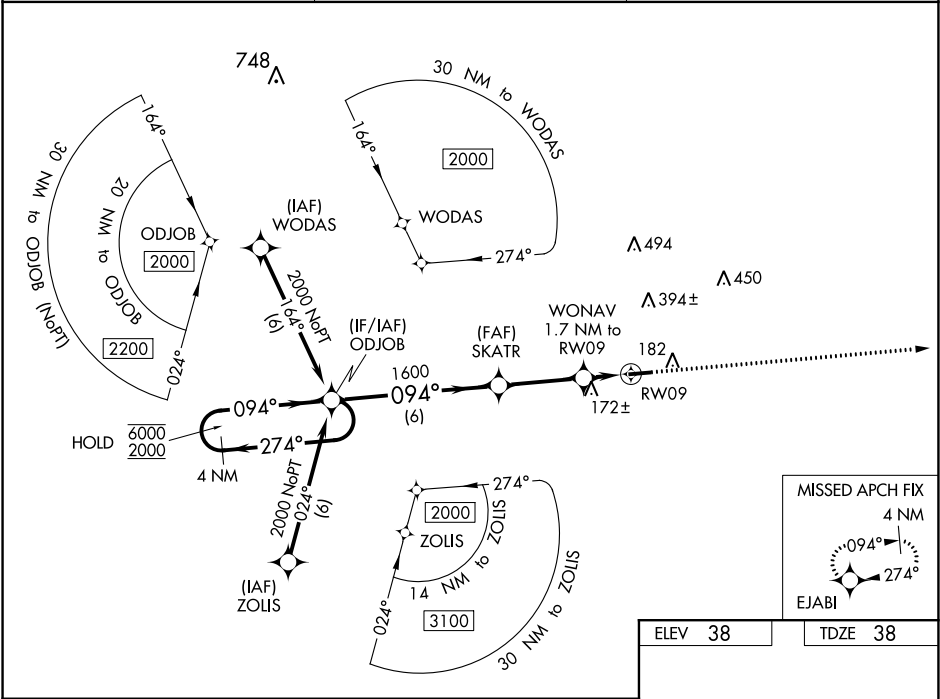


WAAS CH 93536 W09A	APP CRS 094°	Rwy Idg TDZE Apt Elev	4004 38 38
--	------------------------	-----------------------------	---------------------------------------

RNAV (GPS) RWY 9
HENDERSON FIELD (ACZ)

RNP APCH. ▼ Rwy 9 helicopter visibility reduction below 1 SM NA. Baro-VNAV NA. ▲ NA Use Wilmington altimeter setting; when not received, use Kenansville altimeter setting. Straight-in and Circling Rwy 9 NA at night.	MISSED APPROACH: Climb to 2000 direct EJABI and hold.
--	---

WILMINGTON INTL ASOS 124.975	WILMINGTON APP CON ★ 135.75 317.425	UNICOM 122.8 (CTAF) 0
--	---	---------------------------------



SE-2, 31 DEC 2020 to 28 JAN 2021

SE-2, 31 DEC 2020 to 28 JAN 2021