

WAAS CH <b>40336</b> <b>W04A</b>	APP CRS <b>043°</b>	Rwy Idg TDZE <b>92</b> Apt Elev <b>92</b>	<b>4504</b>
--	------------------------	---	-------------

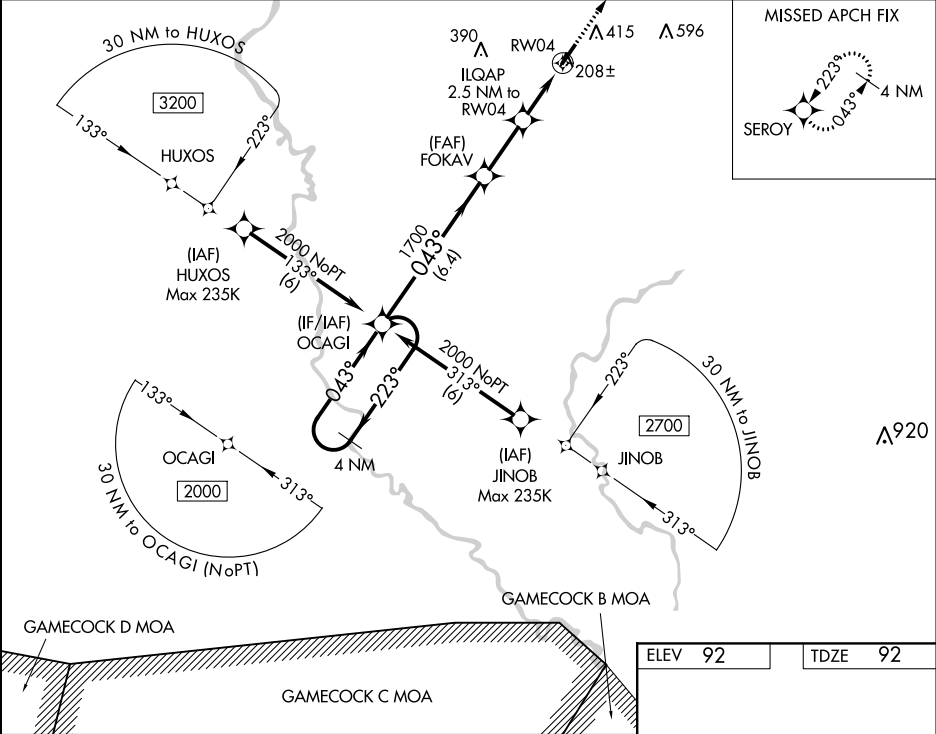
RNAV (GPS) RWY 4

MARION COUNTY (MAO)

Baro-VNAV NA when using Florence altimeter setting. For uncompensated Baro-VNAV systems, LNAV/VNAV NA below -8°C (18°F) or above 54°C (130°F). DME/DME RNP-0.3 NA. Helicopter visibility reduction below ¾ SM NA. When local altimeter setting not received, use Florence altimeter setting and increase all DA 53 feet and all visibilities ½ mile, increase all MDA 60 feet and all Cat C/D visibilities ¼ mile.

MISSED APPROACH:  
Climb to 2000 direct  
SEROY and hold.

AWOS-3 <b>119.875</b>	FLORENCE APP CON ★ <b>135.25 316.15</b>	UNICOM <b>122.8 (CTAF)</b>
--------------------------	--	-------------------------------



4 NM Holding Pattern				
<div>2000 ← 223° 043° →</div> <div>GP 3.00° TCH 39</div> <div>OCAGI</div> <div>FOKAV 1700</div> <div>ILQAP 2.5 NM to RW04</div> <div>RW04</div> <div>*920</div> <div>6.4 NM 2.4 NM 2.5 NM</div>				
<div>2000</div> <div>SEROY</div> <div>*LNAV only.</div>				
CATEGORY	A	B	C	D
LPV DA	342-7⁄8	250 (300-7⁄8)	342-1	250 (300-1)
LNAV/VNAV DA	369-7⁄8	277 (300-7⁄8)	369-1	277 (300-1)
LNAV MDA	460-1		368 (400-1)	
CIRCLING	720-1	628 (700-1)	720-1¾ 628 (700-1¾)	960-2¾ 868 (900-2¾)

