

WAAS CH 99435 W10A	APP CRS 105°	Rwy Idg TDZE 968 Apt Elev 968
--	------------------------	---

RNAV (GPS) RWY 10

STATESVILLE RGNL (SVH)

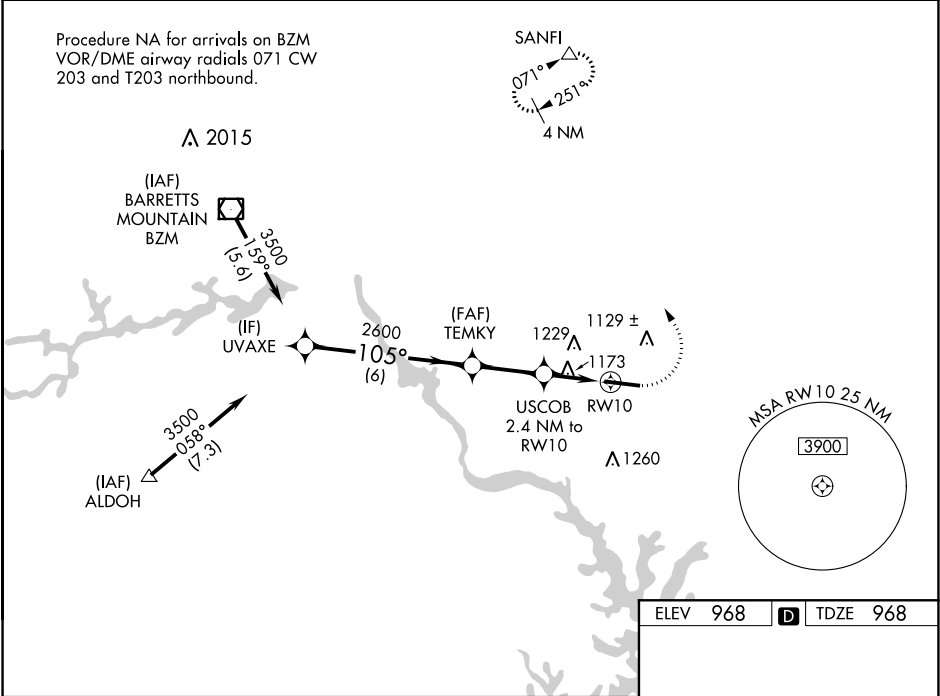
⚠

Baro-VNAV NA when using Lincolnnton altimeter setting. For uncompensated Baro-VNAV systems, LNAV/VNAV NA below -1.6°C (4°F) or above 54°C (130°F). DME/DME RNP-0.3 NA.
Rwy 10 helicopter visibility reduction below ¾ SM NA. When local altimeter setting not received, use Lincolnnton altimeter setting and increase LPV DA to 1263, LNAV/VNAV DA to 1431, and all MDA 60 feet; increase LNAV/VNAV all Cats, LNAV Cats C/D, and Circling Cat C visibility ¼ mile.

MISSED APPROACH:

Climb to 1440 then climbing left turn to 3400 direct SANFI and hold.

AWOS-3 119.225	ATLANTA CENTER 125.15 263.0	UNICOM 123.075 (CTAF) 0
--------------------------	---------------------------------------	-----------------------------------



VGSI and RNAV glidepath not coincident (VGSI Angle 3.00/TCH 50).				
<div><div>UVAXE</div><div>3500</div><div>105°</div><div>2600</div><div>6 NM</div><div>2.6 NM</div><div>2.4 NM</div><div>USCOB 2.4 NM to RW10</div><div>RW10</div><div>1760</div><div>GP 3.00° TCH 60</div><div>1440 3400 SANFI</div><div>* INAV only</div><div>105° to RW10</div><div>7003 X 100</div></div>				
CATEGORY	A	B	C	D
LPV DA	1218-1		250 (300-1)	
LNAV/VNAV DA	1386-1⅓		418 (500-1⅓)	
LNAV MDA	1440-1	472 (500-1)	1440-1⅓	472 (500-1⅓)
CIRCLING	1440-1 472 (500-1)	1540-1 572 (600-1)	1540-1½ 572 (600-1½)	1560-2 592 (600-2)

REIL Rwy 10 0

HIRL Rwy 10-28 0