

WAAS CH <b>60903</b> <b>W28A</b>	APP CRS <b>285°</b>	Rwy Idg <b>5456</b> TDZE <b>967</b> Apt Elev <b>968</b>
--	------------------------	---

RNAV (GPS) RWY 28  
STATESVILLE RGNL (SVH)

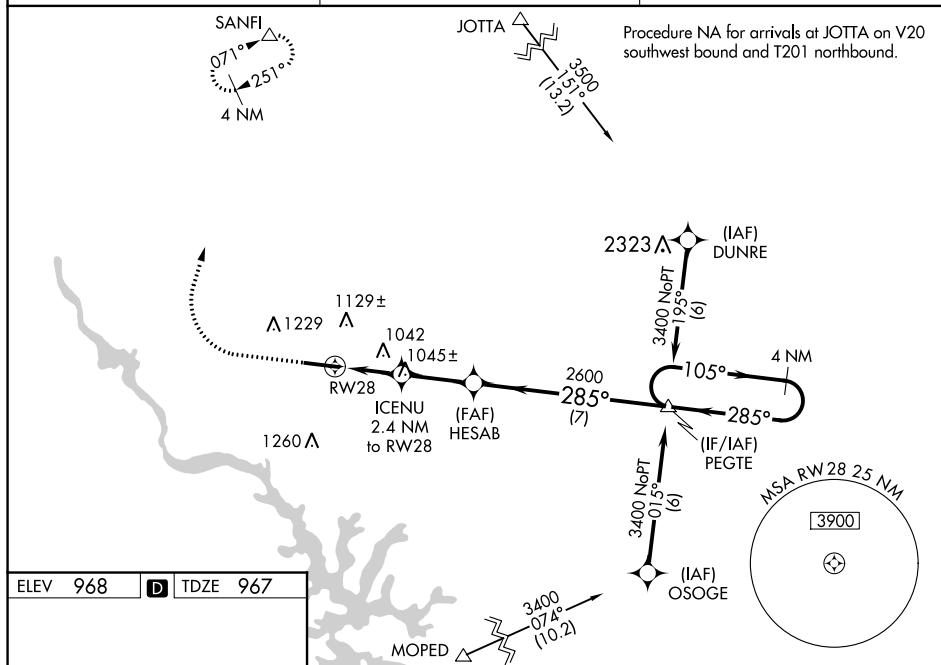
**▼** For uncompensated Baro-VNAV systems, LNAV/VNAV NA below -16°C (4°F) or above 54°C (130°F). DME/DME RNP-0.3 NA. When local altimeter setting not received, use Lincolnolt altimeter setting and increase LPV DA to 1218, LNAV/VNAV DA to 1269, and all MDA 60 feet; increase LNAV/VNAV all Cats and LNAV Cats C/D visibility  $\frac{1}{8}$ , and Circling Cat C  $\frac{1}{4}$  mile. VDP and Baro-VNAV NA when using Lincolnolt altimeter setting. For inop MALSR, increase LNAV/VNAV all Cats and LNAV Cats C/D visibility to  $\frac{1}{2}$  mile. For inop MALSR when using Lincolnolt altimeter setting, increase LNAV/VNAV all Cats and LNAV Cats C/D visibility to 1 mile.

MALSR



**MISSED APPROACH:**  
Climb to 1380 then  
climbing right turn  
to 3400 direct  
SANFI and hold.

AWOS-3 <b>119,225</b>	ATLANTA CENTER <b>125.15 263.0</b>	UNICOM <b>123.075 (CTAF) 0</b>
--------------------------	---------------------------------------	-----------------------------------



CATEGORY	A	B	C	D
LPV DA		1167- <sup>3</sup> / <sub>4</sub>	200 (200- <sup>3</sup> / <sub>4</sub> )	
LNAV/VNAV DA		1218- <sup>3</sup> / <sub>4</sub>	251 (300- <sup>3</sup> / <sub>4</sub> )	
LNAV MDA		1300- <sup>3</sup> / <sub>4</sub>	333 (400- <sup>3</sup> / <sub>4</sub> )	
<b>C</b> CIRCLING	1420-1 452 (500-1)	1540-1 572 (600-1)	1540-1½ 572 (600-1½)	1560-2 592 (600-2)

REIL Rwy 10 **I**  
HIRL Rwy 10-28 **I**