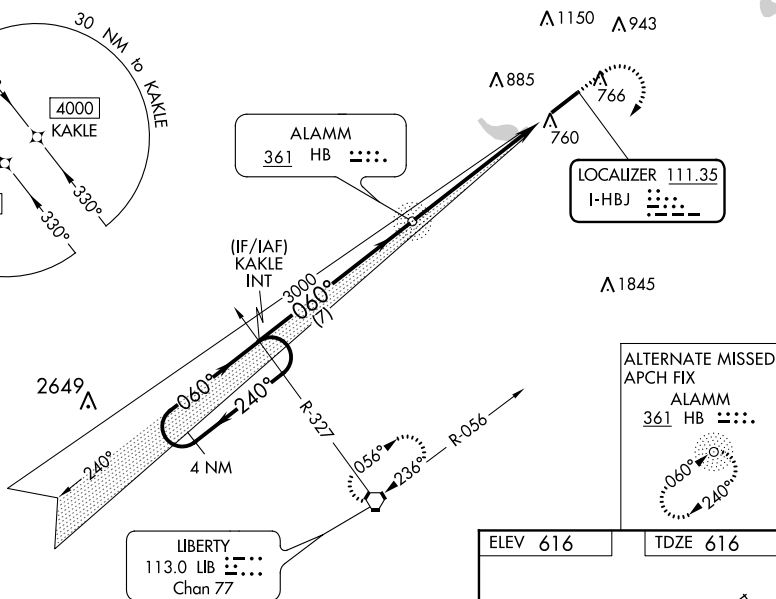
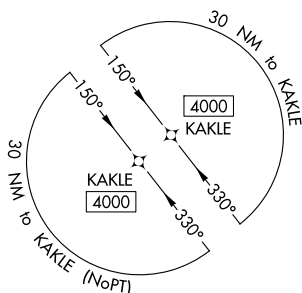


ILS Y or LOC Y RWY 6
BURLINGTON-ALAMANCE RGNL (BUY)

MISSED APPROACH: Climb to 1600 then climbing right turn to 3000 direct LIB VORTAC and hold.

GPS or RADAR REQUIRED
FOR TERMINAL ARRIVAL AREA



ALTERNATE MISSED
APCH FIX
ALAMM
361 HB



BURLINGTON-ALAMANCE RGNL (BUY)
ILS Y or LOC Y RWY 6