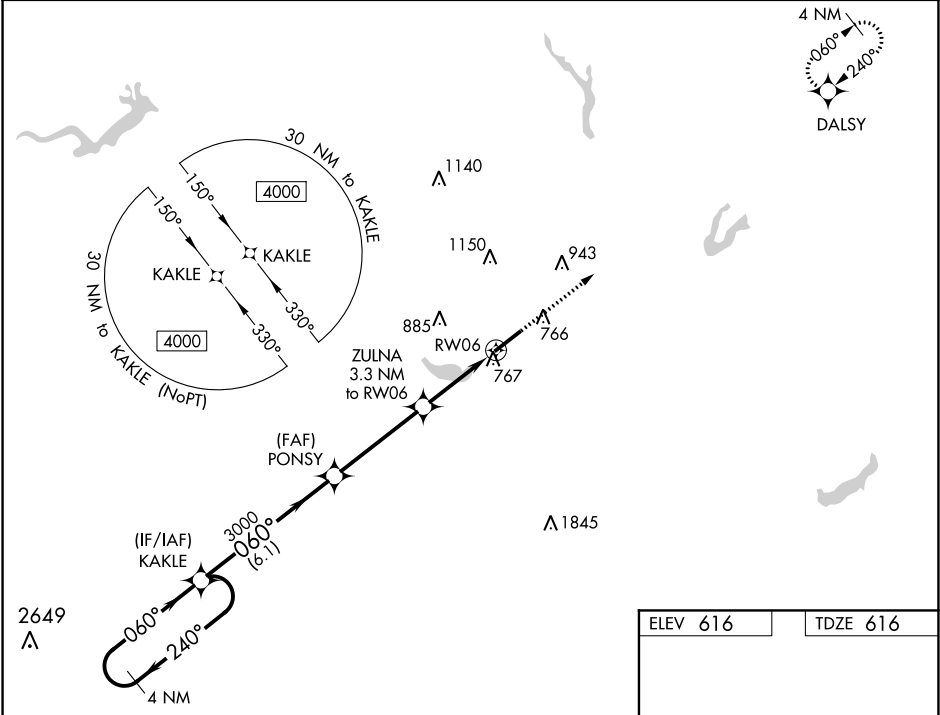


WAAS CH 42911 W06A	APP CRS 060°	Rwy Idg TDZE Apt Elev 6406 616 616	RNAV (GPS) RWY 6 BURLINGTON-ALAMANCE RGNL (BUY)
--	------------------------	--	---

⚠ For uncompensated Baro-VNAV systems, LNAV/VNAV NA below -12°C (11°F) or above 54°C (130°F). DME/DME RNP-0.3 NA. When local altimeter setting not received, use Greensboro altimeter setting and increase all DA 97 feet and all MDA 100 feet, increase LPV and LNAV/VNAV visibility $\frac{3}{8}$ mile, LNAV Cats C/D and Circling Cat C $\frac{1}{4}$ mile. VDP and Baro-VNAV NA when using Greensboro altimeter setting. Helicopter visibility reduction below $\frac{3}{4}$ SM NA.

MISSED APPROACH:
Climb to 4000 direct DALSY and hold.

ASOS 135.325	GREENSBORO APP CON 126.6 327.075	CLNC DEL 120.25	UNICOM 122.975 (CTAF) 0
------------------------	--	---------------------------	--



4 NM Holding Pattern

VGSI and RNAV glidepath not coincident (VGSI Angle 3.00/TCH 45).

GP 3.00° TCH 50

Distances: 6.1 NM, 4 NM, 2.2 NM, 1.1 NM

Altitudes: 4000, 3000, 1700

Waypoints: KAKLE, PONSy, ZULNA, RW06

Obstacles: 2649, 1140, 1150, 885, 767, 766, 943, 1845

Missed Approach: 4000 DALSY, 060° to RW06, 0.5% UP

CATEGORY	A	B	C	D
LPV DA	866- $\frac{3}{4}$ 250 (300- $\frac{3}{4}$)			
LNAV/VNAV DA	928-1 312 (400-1)			
LNAV MDA	1020-1 404 (500-1)		1020-1 $\frac{1}{8}$ 404 (500-1 $\frac{1}{8}$)	
CIRCLING	1100-1 484 (500-1)		1520-3 904 (1000-2 $\frac{3}{4}$) 1520-3 904 (1000-3)	

ELEV 616 TDZE 616

HIRL Rwy 6-24 **0**

REIL Rwy 6 and 24 **0**