

WASS CH <b>77641</b> <b>W21A</b>	APP CRS <b>213°</b>	Rwy Idg <b>4597</b> TDZE <b>18</b> Apt Elev <b>19</b>
--	------------------------	---

RNAV (GPS) RWY 21

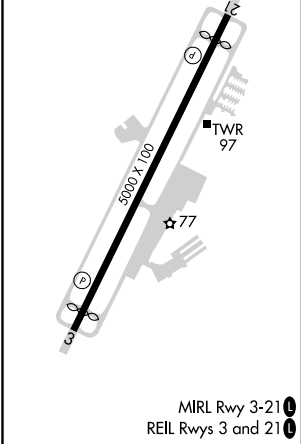
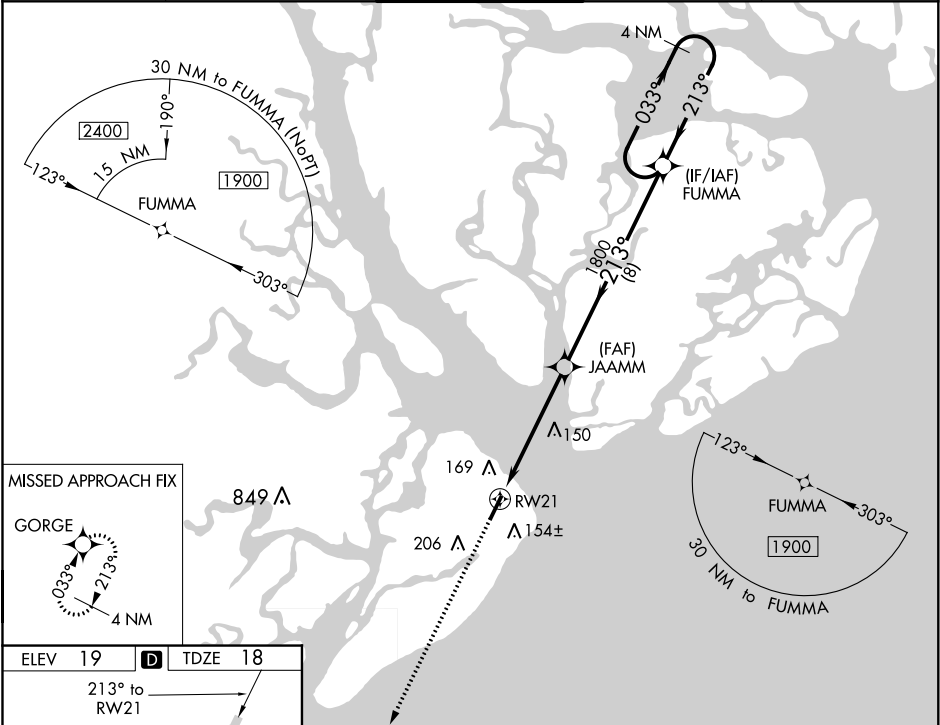
HILTON HEAD (HXD)

▼

For uncompensated Baro-VNAV systems, LNAV/VNAV NA below -15°C (5°F) or above 54°C (130°F).  
DME/DME RNP-0.3 NA. Rwy 21 helicopter visibility reduction below ¾ SM NA.

MISSED APPROACH: Climb to 1900 direct GORGE and hold.

ATIS <b>121.4</b>	SAVANNAH APP CON ★ <b>125.3 371.875</b>	HILTON HEAD TOWER ★ <b>118.975 (CTAF) 0</b>	GND CON <b>121.1</b>	CLNC DEL <b>121.1</b>
----------------------	--	--	-------------------------	--------------------------



ELEV 19		TDZE 18
213° to RWY 21		
3000 x 100		TWR 97
MIRL Rwy 3-21		REIL Rwy 3 and 21
1900		GORGE
VGS and RNAV glidepath not coincident (VGS Angle 3.00/TCH 40).		4 NM Holding Pattern
*LNAV only.		
JAAMM		1800
*1.1 NM to RWY 21		1800
RWY 21		1800
1.1		4.2 NM
8 NM		
CATEGORY	A	B
LPV DA	340-1	322 (400-1)
LNAV/VNAV DA	293-7/8	275 (300-7/8)
LNAV MDA	480-1	462 (500-1)
CIRCLING	480-1	520-1
	461 (500-1)	501 (600-1)
	520-1	501 (600-1½)
	520-1½	580-2
	501 (600-2)	561 (600-2)