

WAAS CH 97418 W35A	APP CRS 354°	Rwy Idg TDZE 186 Apt Elev 195
--	------------------------	---

RNAV (GPS) RWY 35

ORANGEBURG MUNI (OGB)

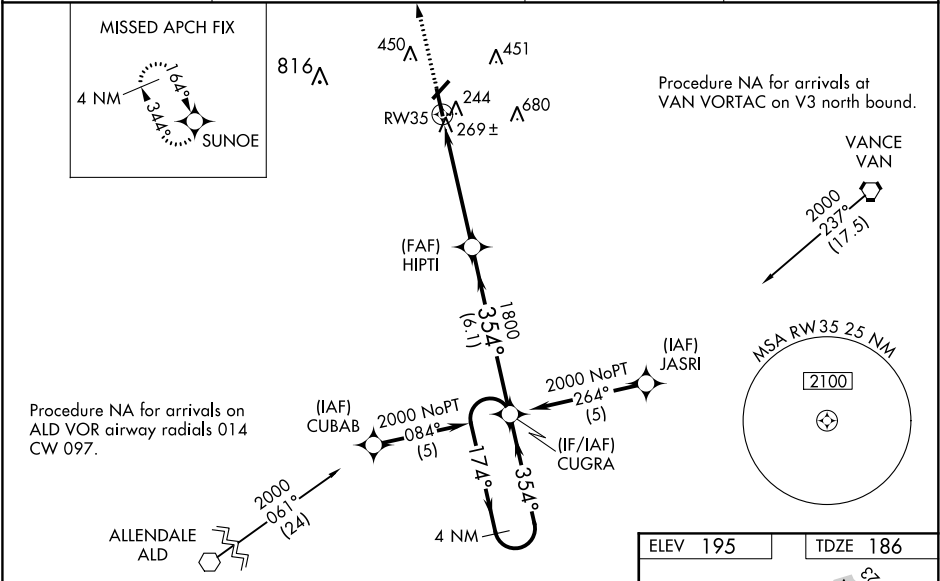
⚠


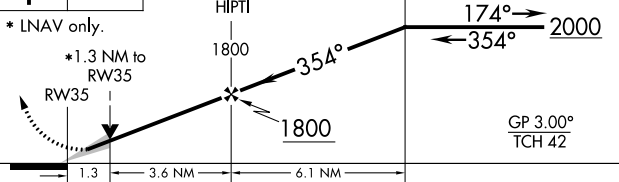
For uncompensated Baro-VNAV systems, LNAV/VNAV NA below -15°C (5°F) or above 48°C (118°F). DME/DME RNP-0.3 NA. Baro-VNAV and VDP NA when using Columbia Metropolitan altimeter setting. When local altimeter setting not received, use Columbia Metropolitan altimeter setting: increase LPV DA to 515 feet, LNAV/VNAV DA to 618 feet and all visibilities ¼ SM; increase all MDAs 80 feet and visibility Cat C and Circling Cat D ¼ SM. For inop ALS, increase LPV Cat A/B visibility to ¾ SM. For inop ALS when using Columbia Metropolitan altimeter setting, increase LPV Cat A/B visibility to 1 ½ SM, and LNAV/VNAV Cat A/B to 1 ½ SM. Circling Rwy 17 NA at night.

ODALS

MISSED APPROACH: Climb to 2000 direct SUNOE and hold.

ASOS 118.525	COLUMBIA APP CON 124.15 338.2	UNICOM 122.7 (CTAF) 0	GCO 125.675
------------------------	---	---------------------------------	-----------------------



2000 ↑	SUNOE 	VGSI and RNAV glidepath not coincident (VGSI Angle 3.00/TCH 37).		4 NM Holding Pattern	
* LNAV only.					
CATEGORY		A	B	C	D
LPV DA	436-¾		250 (300-¾)		
LNAV/ VNAV DA	539-1¼		353 (400-1¼)		
LNAV MDA	640-¾	454 (500-¾)	640-1¼ 454 (500-1¼)	640-1½ 454 (500-1½)	
CIRCLING	720-1 525 (600-1)	800-1 605 (700-1)	800-1¾ 605 (700-1¾)	900-2¼ 705 (800-2¼)	

