

LOC/DME I-EQY 109.75 Chan 34 (Y)	APP CRS 053°	Rwy Idg TDZE Apt Elev 7001 683 683
---	------------------------	--

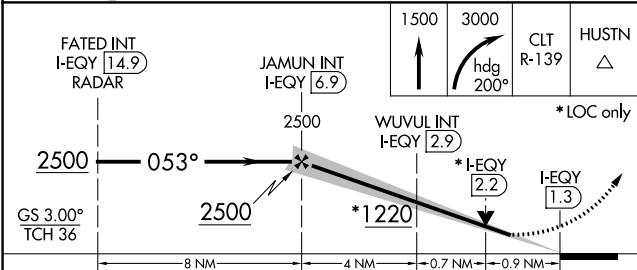
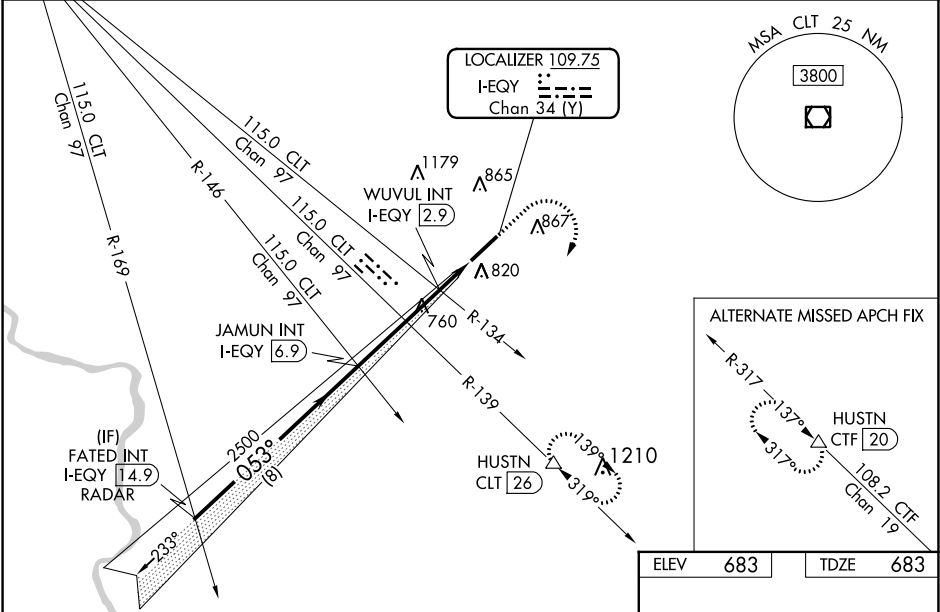
ILS or LOC RWY 5
CHARLOTTE-MONROE EXECUTIVE (EQY)

DME required, RADAR required for procedure entry.

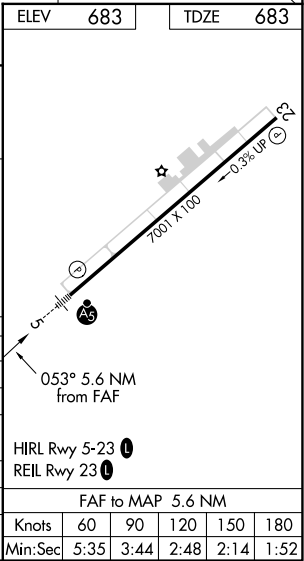
▼ VDP NA when using Charlotte altimeter setting. When local altimeter setting not received, use Charlotte altimeter setting and increase DA to 939 feet; increase all MDAs 60 feet, increase S-LOC 5 Cats C and D and Circling Cat C and D visibility ¼ SM. WUVUL fix minimums: increase S-LOC 5 Cats C and D and Circling Cat D visibility ¼ SM. For inop ALS when using Charlotte altimeter setting, increase S-ILS 5 all Cats visibility to ¾ SM.

MALSR
MISSED APPROACH: Climb to 1500 then climbing right turn to 3000 on heading 200° and on CLT VOR/DME R-139 to HUSTN/CLT 26 DME and hold.

ASOS 135.775	CHARLOTTE APP CON 120.05 307.8	CLNC DEL 132.55	UNICOM 122.7 (CTAF)
------------------------	--	---------------------------	-------------------------------



CATEGORY	A	B	C	D
S-ILS 5		883-½	200 (200-½)	
S-LOC 5	1220-½	537 (600-½)	1220-1	537 (600-1)
CIRCLING	1220-1	537 (600-1)	1220-1½ 537 (600-1½)	1480-2½ 797 (800-2½)
WUVUL FIX MINIMUMS (DUAL VOR RECEIVERS OR DME REQUIRED)				
S-LOC 5		1020-½	337 (400-½)	
CIRCLING	1220-1	537 (600-1)	1220-1½ 537 (600-1½)	1480-2½ 797 (800-2½)



SE-2, 31 DEC 2020 to 28 JAN 2021

SE-2, 31 DEC 2020 to 28 JAN 2021