

LOC I-RWI	APP CRS	Rwy Idg	7099
108.3	042°	TDZE	158
		Apt Elev	158

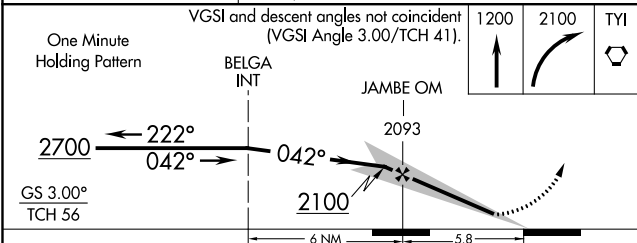
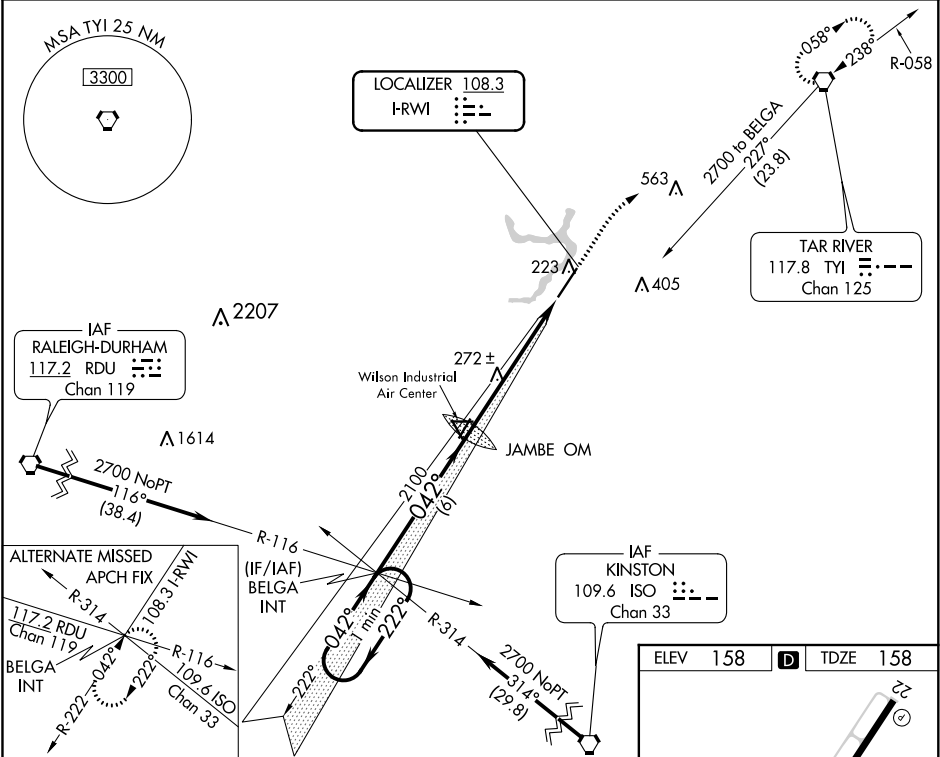
ILS or LOC RWY 4
ROCKY MOUNT-WILSON RGNL (RWI)

NA

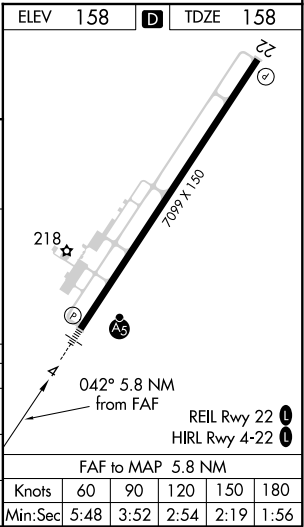
MALSR

MISSED APPROACH: Climb to 1200 then climbing right turn to 2100 direct TYI VORTAC and hold.

ASOS 118.875	WASHINGTON CENTER 123.85 279.65	UNICOM 123.05 (CTAF)
-----------------	------------------------------------	-------------------------



CATEGORY	A	B	C	D
S-ILS 4	408-1/2 250 (300-1/2)			
S-LOC 4	540-1/2	382 (400-1/2)	540-5/8 382 (400-3/4)	540-3/4 382 (400-3/4)
CIRCLING	600-1 442 (500-1)	620-1 462 (500-1)	720-1 1/2 562 (600-1 1/2)	740-2 582 (600-2)



SE-2, 31 DEC 2020 to 28 JAN 2021

SE-2, 31 DEC 2020 to 28 JAN 2021