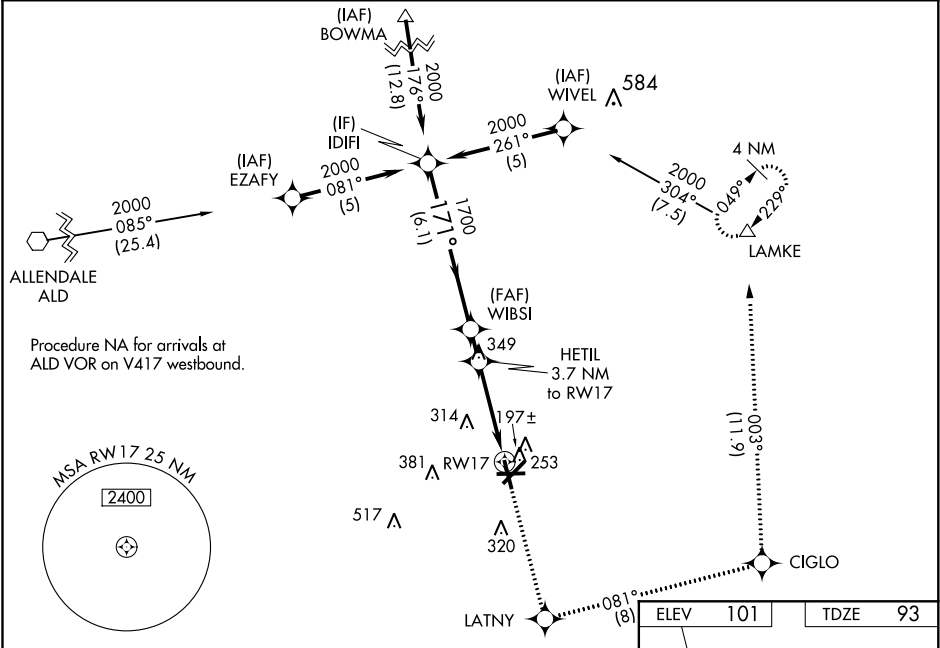


WAAS CH 93616 W17A	APP CRS 171°	Rwy Idg TDZE 93 Apt Elev 101	5705
--	------------------------	--	-------------

RNAV (GPS) RWY 17

LOWCOUNTRY RGNL (RBW)

<div><div>▼</div><div>▲</div></div> <div>For uncompensated Baro-VNAV systems, LNAV/VNAV NA below -15°C (5°F) or above 54°C (130°F). Baro-VNAV and VDP NA when using Charleston Int/AFB altimeter setting. DME/DME RNP-0.3 NA. When local altimeter setting not received, use Charleston AFB/Int altimeter setting: increase LPV DA to 421 feet and LNAV/VNAV DA to 587 feet and all MDA 80 feet; increase LPV visibility all Cats ¼ mile; increase LNAV/VNAV visibility all Cats, LNAV Cats C/D, and Circling Cat D visibility ¼ mile; increase Circling Cat C visibility ½ mile.</div>		MISSED APPROACH: Climb to 2100 direct LATNY and on track 081° to CIGLO and track 003° to LAMKE and hold.	
AWOS-3 118.725	CHARLESTON APP CON 120.7 306.925	GCO 121.725	UNICOM 122.8 (CTAF) 0



IDIFI		2100 ↑		LATNY ✧		tr 081°		CIGLO ✧		tr 003°		LAMKE △	
2000		WIBSI 1700		HETIL 3.7 NM to RW17		*1.4 NM to RW17		*LNAV only.					
GP 3.00° TCH 40		1700		*1300		RW17							
6.1 NM		1.2 NM		2.3 NM		1.4 NM							
CATEGORY	A		B		C		D						
LPV DA			343-1		250 (300-1)								
LNAV/ VNAV DA			508-1½		415 (500-1½)								
LNAV MDA	580-1		487 (500-1)		580-1¾		487 (500-1¾)						
CIRCLING	620-1 519 (600-1)		640-1 539 (600-1)		700-1½ 599 (600-½)		700-2 599 (600-2)						

