

WAAS  
CH **53720**  
**W06A**

APP CRS  
**060°**

Rwy Idg **5002**  
TDZE **142**  
Apt Elev **144**

RNAV (GPS) RWY 6

CLINTON-SAMPSON COUNTY (CTZ)

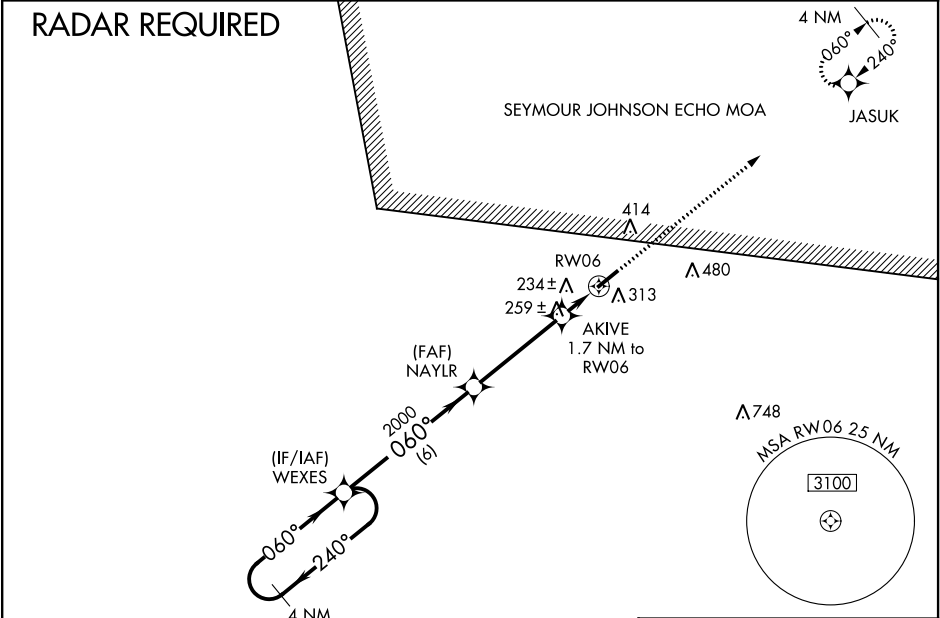
▼

▲

Baro-VNAV NA when using Kenansville altimeter setting. For uncompensated Baro-VNAV systems, LNAV/VNAV NA below -15°C (5°F) or above 43°C (109°F). DME/DME RNP-0.3 NA. VDP NA with Kenansville altimeter setting. When local altimeter setting not received, use Kenansville altimeter setting and increase all DA 45 feet and all MDA 60 feet and increase LNAV/VNAV all Cats visibility 1/8 mile, LNAV Cats C/D and Circling Cats C/D visibility 1/4 mile. Rwy 24 helicopter visibility reduction below 1 SM NA. Circling Rwy 24 NA at night.

MISSED APPROACH:  
Climb to 2500 direct JASUK and hold.

AWOS-3 <b>119.125</b>	FAYETTEVILLE APP CON <b>133.0 290.25</b>	UNICOM <b>122.8 (CTAF)</b>
--------------------------	---	-------------------------------



ELEV 144

TDZE 142

2500

4 NM Holding Pattern

240°

060°

GP 3.00° TCH 39

WEXES

2000

NAYLR

AKIVE 1.7 NM to RW06

2500

JASUK

\*1.1 NM to RW06

RW06

\*700

\*LNAV only.

CATEGORY	A	B	C	D
LPV DA		342-3/4	200 (200-3/4)	
LNAV/ VNAV DA		545-1 3/8	403 (500-1 3/8)	
LNAV MDA	520-1	378 (400-1)	520-1 1/8	378 (400-1 1/8)
CIRCLING	680-1	536 (600-1)	780-1 3/4 636 (700-1 3/4)	780-2 636 (700-2)

6 NM

4.1 NM

0.6

1.1

5002 X 75

0.3% UP

060° to RW06

MIRL Rwy 6-24

REIL Rws 6 and 24