

KNIGHTS TWO DEPARTURE

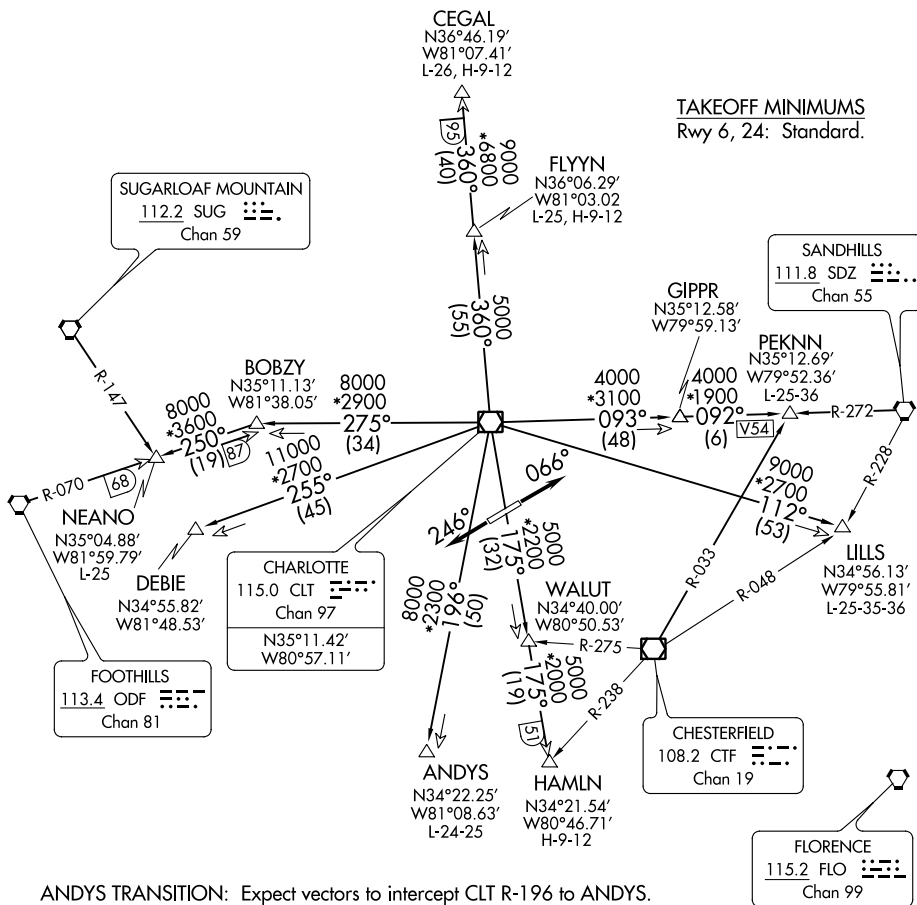
LANCASTER COUNTY-MC WHIRTER FIELD (LKR)

LANCASTER, SOUTH CAROLINA

AWOS-3
120.825
GCO
121.725
UNICOM (CTAF)
122.725
CHARLOTTE DEP CON
120.05 307.8

NOTE: For propeller aircraft only.
NOTE: RADAR and DME required.
NOTE: Turboprops: Operate in a manner that will result in best forward speed and climb rate.
NOTE: Transponder code will be issued via Charlotte clearance delivery.

**TOP ALTITUDE:
3000**



ANDYS TRANSITION: Expect vectors to intercept CLT R-196 to ANDYS.
CEGAL TRANSITION: Expect vectors to intercept CLT R-360 to CEGAL.
DEBIE TRANSITION: Expect vectors to intercept CLT R-255 to DEBIE.
FLYNN TRANSITION: Expect vectors to intercept CLT R-360 to FLYNN.
HAMLN TRANSITION: Expect vectors to intercept CLT R-175 to HAMLN.
LILLS TRANSITION: Expect vectors to intercept CLT R-112 to LILLS.
NEANO TRANSITION: Expect vectors to intercept CLT R-275 to BOBZY then ODF R-070 to NEANO.
PEKNN TRANSITION: Expect vectors to intercept CLT R-093 to GIPPR then SDZ R-272 to PEKNN.

(NARRATIVE ON FOLLOWING PAGE)

NOTE: Chart not to scale.

KNIGHTS TWO DEPARTURE