

RNP APCH.

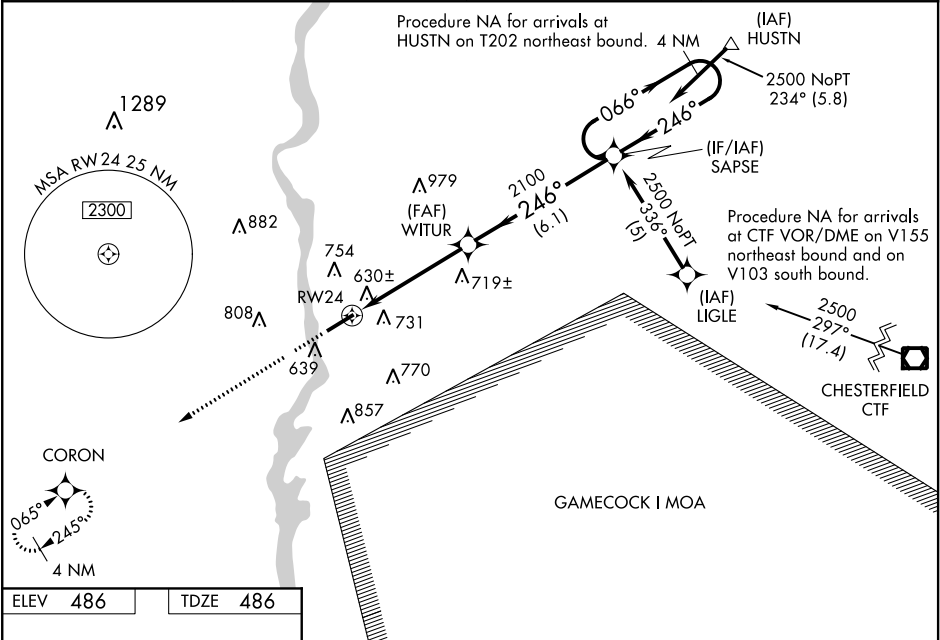
▼

⚠

When VGSI inoperative Straight-in/Circling Rwy 24 procedure NA at night. Baro-VNAV NA when using Rock Hill altimeter setting. For uncompensated Baro-VNAV systems, LNAV/VNAV NA below -15°C or above 47°C. When local altimeter setting not received, use Rock Hill altimeter setting and increase LPV DA to 805 feet, LNAV/VNAV DA to 1086 feet, and all MDA 80 feet, increase LNAV Cat C and Circling Cats C and D visibility ¼ SM.

MISSED APPROACH:
Climb to 2200 direct CORON and hold.

AWOS-3 120.825	CHARLOTTE APP CON 120.05 307.8	GCO 121.725	UNICOM 122.725 (CTAF) 0
-------------------	-----------------------------------	----------------	----------------------------



ELEV 486	TDZE 486	2200	CORON	4 NM Holding Pattern
CATEGORY	A	B	C	D
LPV DA	736-1 250 (300-1)			
LNAV/VNAV DA	1017-2 531 (600-2)			
LNAV MDA	960-1	474 (500-1)	960-1¼ 474 (500-1¼)	960-1½ 474 (500-1½)
CIRCLING	1040-1	554 (600-1)	1060-1½ 574 (600-1½)	1080-2 594 (600-2)