

WAAS CH 49009 W05A	APP CRS 052°	Rwy Idg TDZE 89 Apt Elev 93	7100
--	------------------------	---	-------------

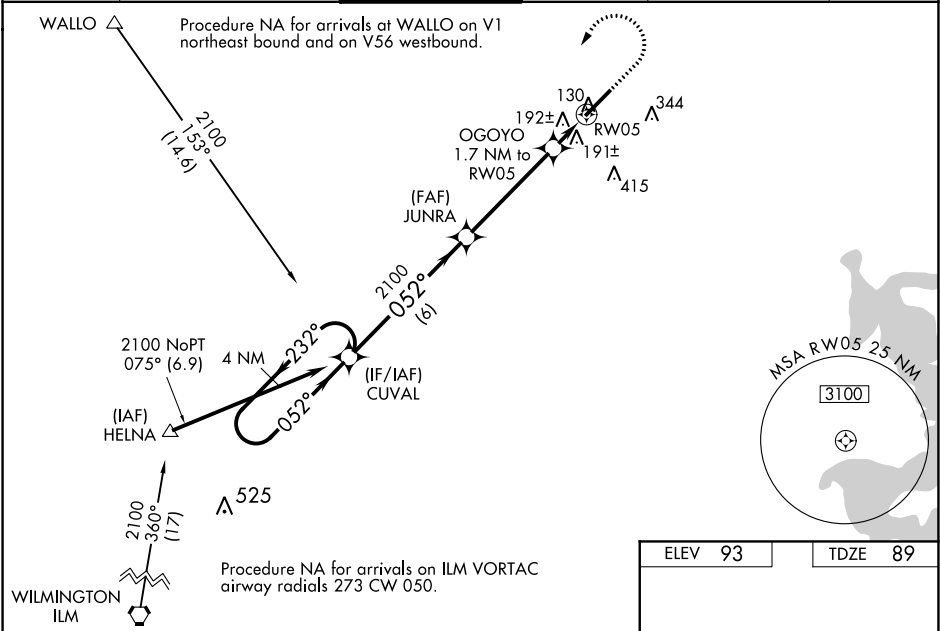
RNAV (GPS) RWY 5
ALBERT J ELLIS (OAJ)

Baro-VNAV NA when using Wilmington altimeter setting. For uncompensated Baro-VNAV systems, LNAV/VNAV NA below -15°C (5°F) or above 43°C (109°F). DME/DME RNP -0.3 NA. VDP NA with Wilmington altimeter setting. When local altimeter setting not received, use Wilmington altimeter setting and increase all DA 93 feet and all MDA 100 feet, increase LNAV/VNAV all Cats and LNAV Cats C/D visibility ¾ mile. For inoperative MALSR, increase LNAV Cat C/D visibility to 1 mile. For inoperative MALSR, when using Wilmington altimeter setting, increase LPV all Cats visibility to ¾ mile, increase LNAV/VNAV all Cats to 1½ mile, and LNAV Cat C/D to 1¾ mile.

MALSR

MISSED APPROACH:
Climb to 900 then climbing left turn to 2100 direct CUVAL and hold.

ATIS 124.475	WILMINGTON APP CON ★ 135.75 317.425	ELLIS TOWER ★ 132.65 (CTAF)	GND CON 125.4	CLNC DEL 121.4 257.6 (when twr closed)	UNICOM 122.95
------------------------	---	---------------------------------------	-------------------------	---	-------------------------



4 NM Holding Pattern

GP 3.00° TCH 55

CUVAL JUNRA 2100

OGOGO 1.7 NM to RW05

*680

*1 NM to RW05

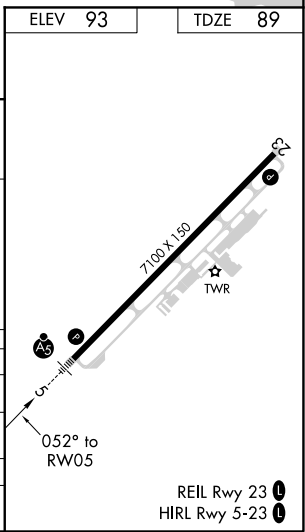
RW05

2100 232° 052° 2100

900 2100 CUVAL

*LNAV only.

CATEGORY	A	B	C	D
LPV DA		289-½	200 (200-½)	
LNAV/VNAV DA		465-¾	376 (400-¾)	
LNAV MDA	460-½	371 (400-½)	460-⅝	371 (400-⅝)
CIRCLING	500-1 407 (500-1)	560-1 467 (500-1)	560-1½ 467 (500-1½)	660-2 567 (600-2)



SE-2, 31 DEC 2020 to 28 JAN 2021

SE-2, 31 DEC 2020 to 28 JAN 2021