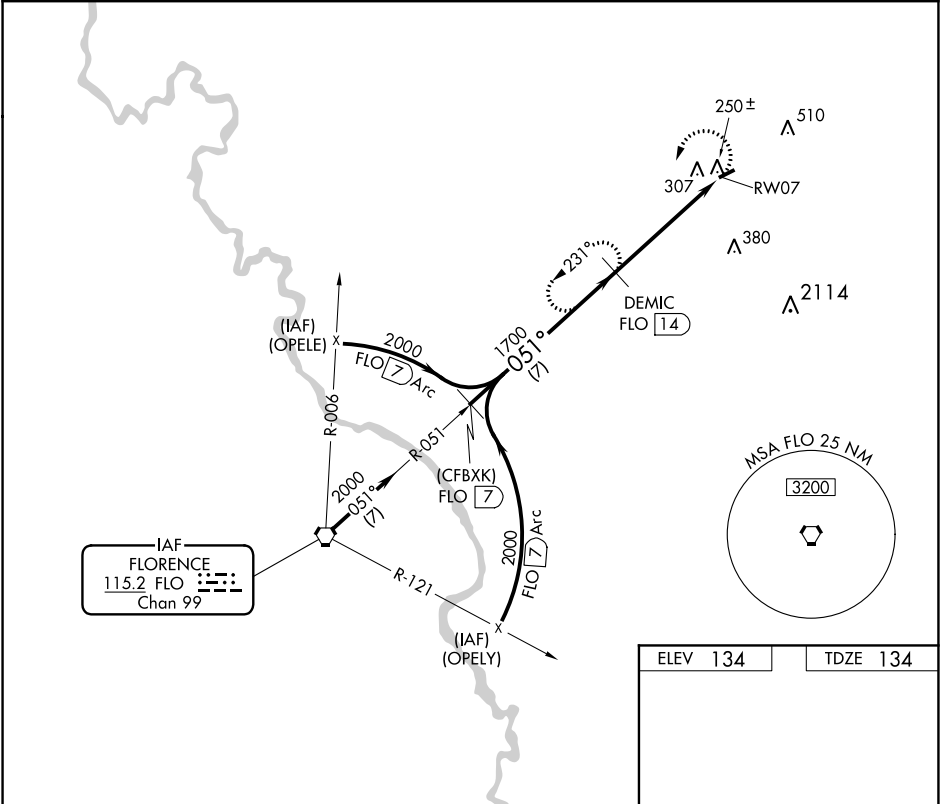


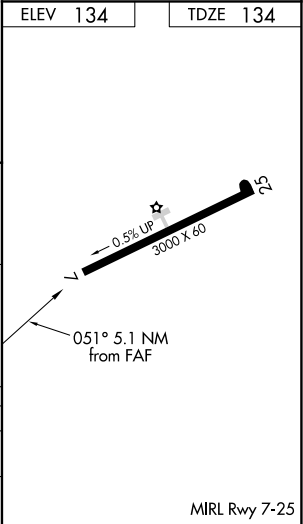
VORTAC FLO	APP CRS	Rwy Idg	3000
<u>115.2</u>	<u>051°</u>	TDZE	134
Chan 99		Apt Elev	134

VOR/DME or GPS RWY 7  
DILLON COUNTY (DLC)

<div><div>▼</div><div>▲NA</div></div> <div>Use Florence altimeter setting.</div>	MISSED APPROACH: Climbing left turn to 2000 via FLO R-051 to DEMIC 14 DME and hold.
FLORENCE APP CON ★ 118.6 341.7	CTAF 122.9



<div><div>(CFBXX) FLO 7</div><div>2000</div><div>Procedure Turn NA</div></div>				<div><div>DEMIC FLO 14</div><div>1700</div><div>*</div></div>				<div><div>2000</div><div>FLO R-051</div><div>DEMIC FLO 14</div></div>			
<div><div>7 NM</div></div>				<div><div>5.1 NM</div></div>				<div><div>RW07 FLO 19.1</div><div>↗</div></div>			
CATEGORY		A		B		C		D			
S-7		660-1 526 (600-1)				660-1½ 526 (600-1½)				NA	
CIRCLING		700-1 566 (600-1)				700-1½ 566 (600-1½)				NA	



SE-2, 31 DEC 2020 to 28 JAN 2021

SE-2, 31 DEC 2020 to 28 JAN 2021