

WAAS  
CH **70637**  
**W01A**

APP CRS  
**008°**

Rwy Idg **4501**  
TDZE **67**  
Apt Elev **67**

**RNAV (GPS) RWY 1**

TRI-COUNTY AT HENRY JONER FIELD (A.SJ)

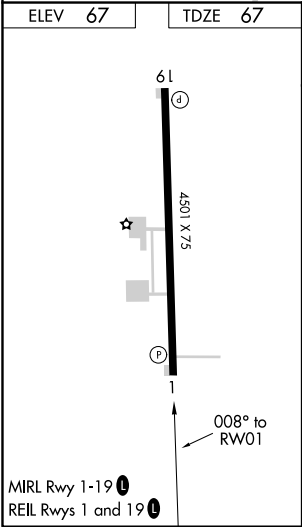
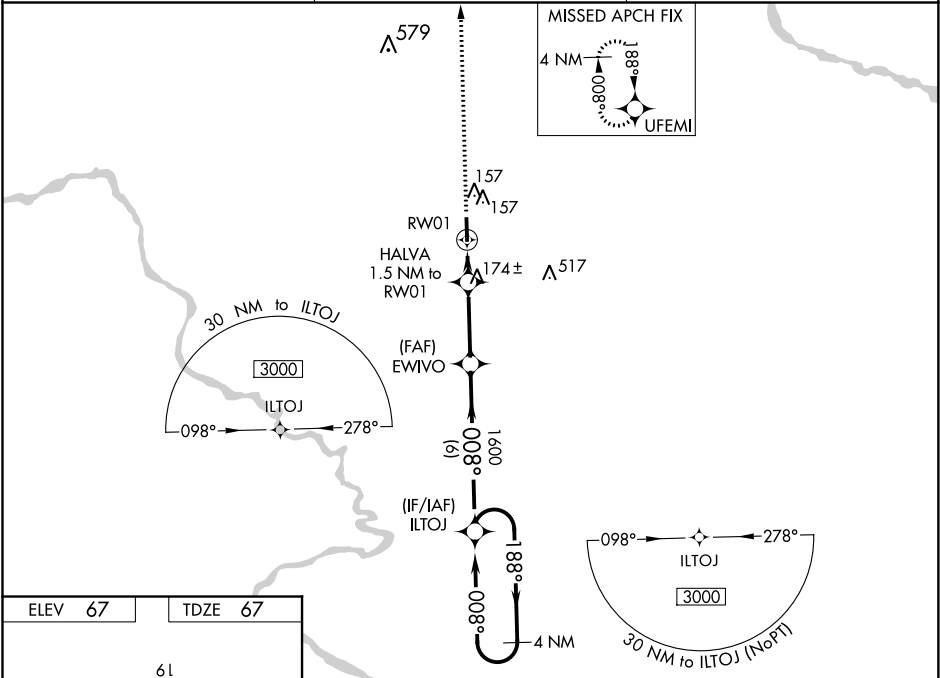
⚠

⚠

DME/DME RNP-0.3 NA. Night Landing: Rwy 1 NA. When local altimeter setting not received, use Franklin altimeter setting and increase all DA 67 feet and all MDA 80 feet; increase LPV all Cats visibility ⅓ mile, LNAV Cats C/D visibility ⅓ mile and Circling Cat D visibility ¼ mile. Baro-VNAV NA when using Franklin altimeter setting. For uncompensated Baro-VNAV systems, LNAV/VNAV NA below -15°C (5°F) or above 54°C (130°F). Helicopter visibility reduction below 1 SM NA.

MISSED APPROACH:  
Climb to 3000 direct UFEMI and hold, continue climb-in-hold to 3000.

AWOS-3 <b>119.075</b>	WASHINGTON CENTER <b>123.85 279.65</b>	UNICOM <b>122.8(CTAF)</b> <b>0</b>
--------------------------	---	---------------------------------------



3000	UFEMI	ILTOJ	4 NM Holding Pattern	3000
*LNAV only.	HALVA 1.5 NM to RW01	EWVVO 1600	008°	1600
	RW01	*600	1600	GP 3.17° TCH 41
	1.5 NM	2.9 NM	6 NM	
CATEGORY	A	B	C	D
LPV DA	359-1	292 (300-1)		NA
LNAV/VNAV DA	322-1	255 (300-1)		NA
LNAV MDA	440-1	373 (400-1)		
<b>C</b> CIRCLING	580-1	513 (600-1)	580-1½ 513 (600-1½)	820-2½ 753 (800-2½)