

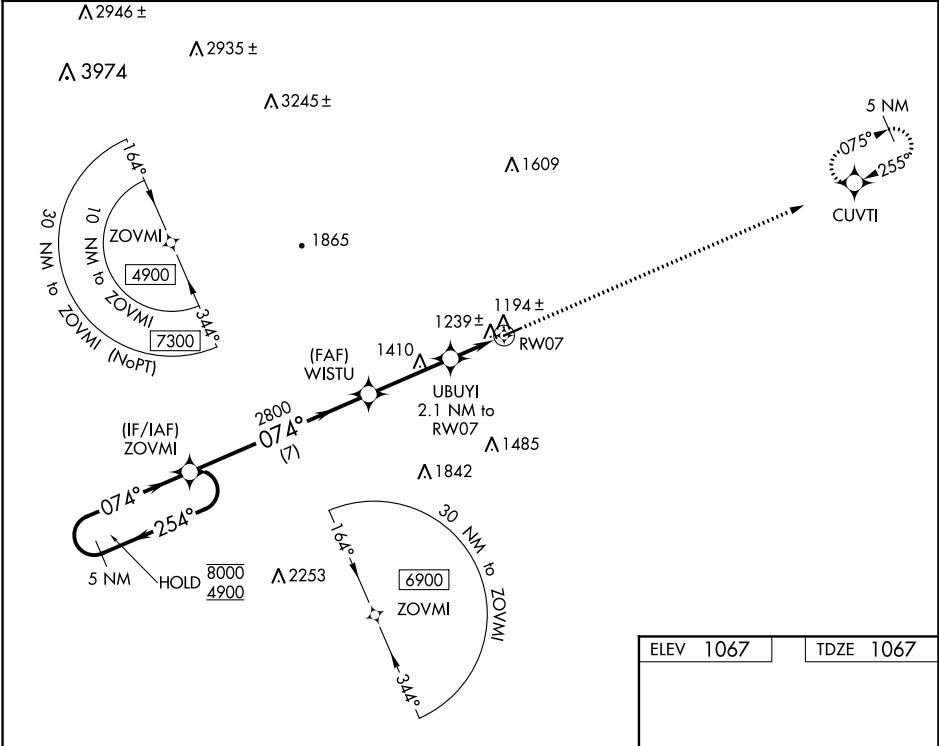
WAAS CH <b>65836</b> <b>W07A</b>	APP CRS <b>074°</b>	Rwy Idg TDZE Apt Elev	<b>4001</b> <b>1067</b> <b>1067</b>
--	------------------------	-----------------------------	---

RNAV (GPS) RWY 7

ELKIN MUNI (ZEF)

RNP APCH.	Procedure NA at night. Obtain local altimeter setting on CTAF; when not received, use Mount Airy altimeter setting and increase all MDAs 80 feet and all Cats C/D visibilities ¼ SM. Rwy 7 helicopter visibility reduction below 1 SM NA.	MISSED APPROACH: Climb to 5100 direct CUVTI and hold, continue climb-in-hold to 5100.
-----------	---	---

ATLANTA CENTER <b>125.15 263.0</b>	UNICOM <b>123.05 (CTAF)</b>
---------------------------------------	--------------------------------



5 NM Holding Pattern	ZOVMI	Visual Segment - Obstacles.	5100	CUVTI
8000 4900	254°	074°	2800	1780
7 NM 3.2 NM 2.1 NM				
CATEGORY	A	B	C	D
LP MDA	1460-1	393 (400-1)	1460-1½	393 (400-1½)
LNAV MDA	1500-1	433 (500-1)	1500-1¼	433 (500-1¼)
CIRCLING	1540-1 473 (500-1)	1600-1 533 (600-1)	1680-1¾ 613 (700-1¾)	1840-2½ 773 (800-2½)

MIRL Rwy 7-25

REIL Rwy 7 and Rwy 25