

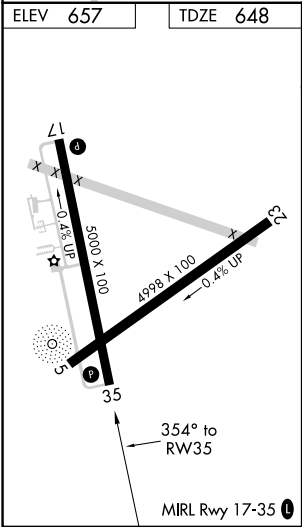
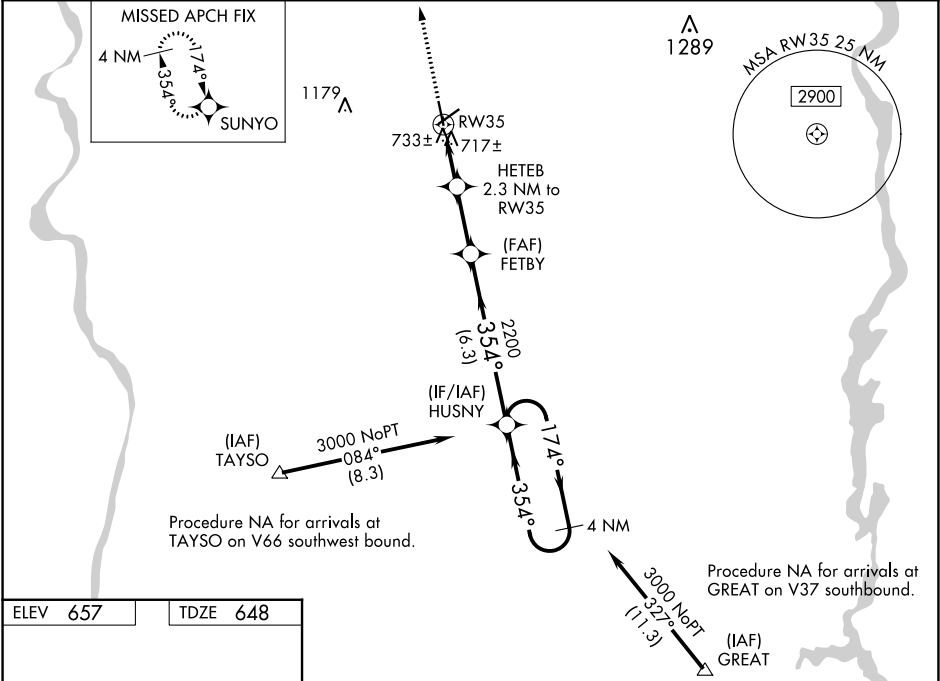
| | | |
|--|------------------------|---|
| WAAS CH 40318 W35A | APP CRS 354° | Rwy Idg TDZE 648 Apt Elev 657 |
|--|------------------------|---|




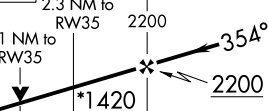
RNAV (GPS) RWY 35
CHESTER CATAWBA RGNL (DCM)

⚠ Circling to Rwy 5-23 NA at night. For uncompensated Baro-VNAV systems, LNAV/VNAV NA below -16°C (4°F) or above 47°C (116°F). DME/DME RNP-0.3 NA. Visibility reduction by helicopters NA. When local altimeter setting not received, use Rock Hill altimeter setting and increase all DA 33 feet and all MDAs 40 feet; increase LPV, LNAV/VNAV all Cats and LNAV Cat C visibility ¼ mile. Baro-VNAV and VDP NA when using Rock Hill altimeter setting.

MISSED APPROACH:
Climb to 3000 direct SUNYO and hold.

| | | |
|--------------------------|--|---------------------------------|
| AWOS-3 120.975 | CHARLOTTE APP CON 120.05 307.8 | UNICOM 122.7 (CTAF) 0 |
|--------------------------|--|---------------------------------|



| | | | | | |
|--|---|---|-------------------------|-----------------------|-------------------------|
| 3000 | SUNYO | VGSI and RNAV glidepath not coincident (VGSI Angle 3.00/TCH 32). | | HUSNY | 4 NM Holding Pattern |
|  |  | HETEB 2.3 NM to RW35 | FETBY 2200 | 2200 | 3000 |
| <p>*LNAV only.</p> <p></p> <p></p> <p><u>*1.1 NM to RW35</u></p> <p><u>*1420</u></p> <p><u>GP 3.00°</u> <u>TCH 55</u></p> <p><u>1.1 NM</u> <u>1.2 NM</u> <u>2.4 NM</u> <u>6.3 NM</u></p> | | | | | |
| CATEGORY | A | | B | C | D |
| LPV DA | 940-1 292 (300-1) | | | | |
| LNAV/VNAV DA | 1010-1¼ 362 (400-1¼) | | | | |
| LNAV MDA | 1020-1 372 (400-1) | | | | 1020-1¼ 372 (400-1¼) |
| CIRCLING | 1160-1 503 (600-1) | | 1160-1½ 503 (600-1½) | 1220-2 563 (600-2) | |