

WAAS CH 50405 W25A	APP CRS 253°	Rwy Idg TDZE 891 Apt Elev 891
--	------------------------	---

RNAV (GPS) RWY 25

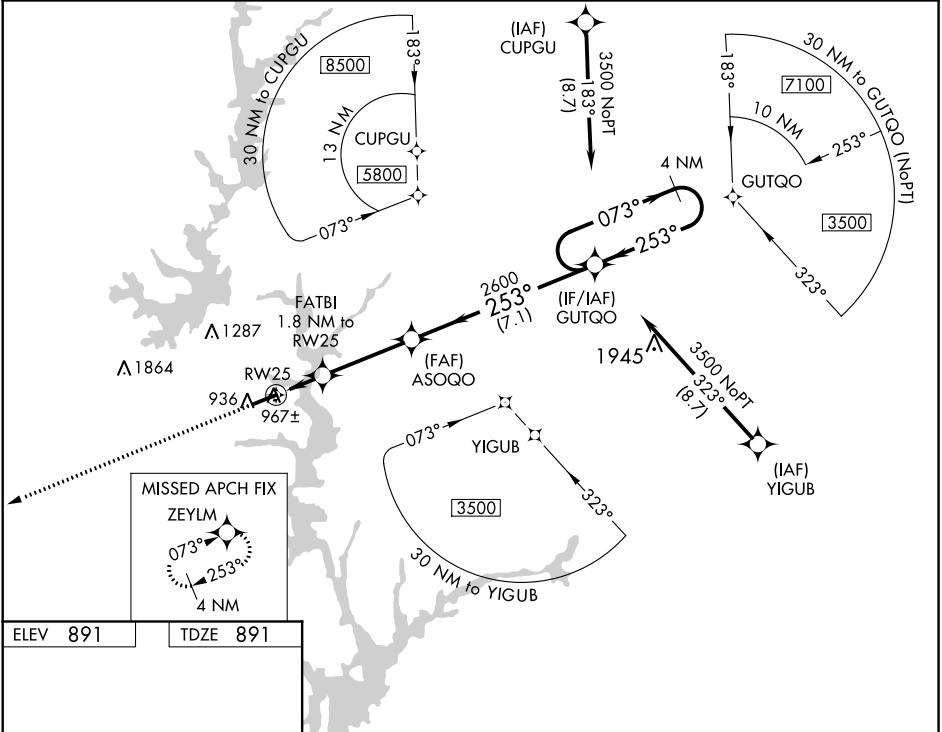
OCONEE COUNTY RGNL (CEU)

⚠

For uncompensated Baro-VNAV systems, LNAV/VNAV NA below -6°C (22°F) or above 54°C (130°F). DME/DME RNP-0.3 NA. When local altimeter setting not received, use Anderson altimeter setting and increase all DA 47 feet and all MDA 60 feet; increase LPV all Cats, and LNAV Cat C visibility 1/8 mile; increase LNAV/VNAV all Cats visibility 1/4 mile. Baro-VNAV and VDP NA when using Anderson altimeter setting.

MISSED APPROACH: Climb to 3000 direct ZEYLM and hold.

ASOS 119.275	GREER APP CON★ 118.8 270.275	UNICOM 122.7 (CTAF) 0
------------------------	--	---------------------------------



ELEV 891 TDZE 891

3000 ZEYLM

*LNAV only.

1 NM to RW25

ASOQO 2600

GUTQO 4 NM Holding Pattern

GP 3.00° TCH 35

1480*

2600

3500

	A	B	C	D
LPV DA	1091-3/4	200 (200-3/4)		NA
LNAV/VNAV DA	1141-7/8	250 (300-7/8)		NA
LNAV MDA	1220-1	329 (400-1)		NA
CIRCLING	1300-1 409 (500-1)	1360-1 469 (500-1)	1640-2 1/4 749 (800-2 1/4)	NA