

WAAS CH 97605 W07A	APP CRS 073°	Rwy Idg TDZE 891 Apt Elev 891	5000
--	------------------------	---	-------------

RNAV (GPS) RWY 7

OCONEE COUNTY RGNL (CEU)

⚠

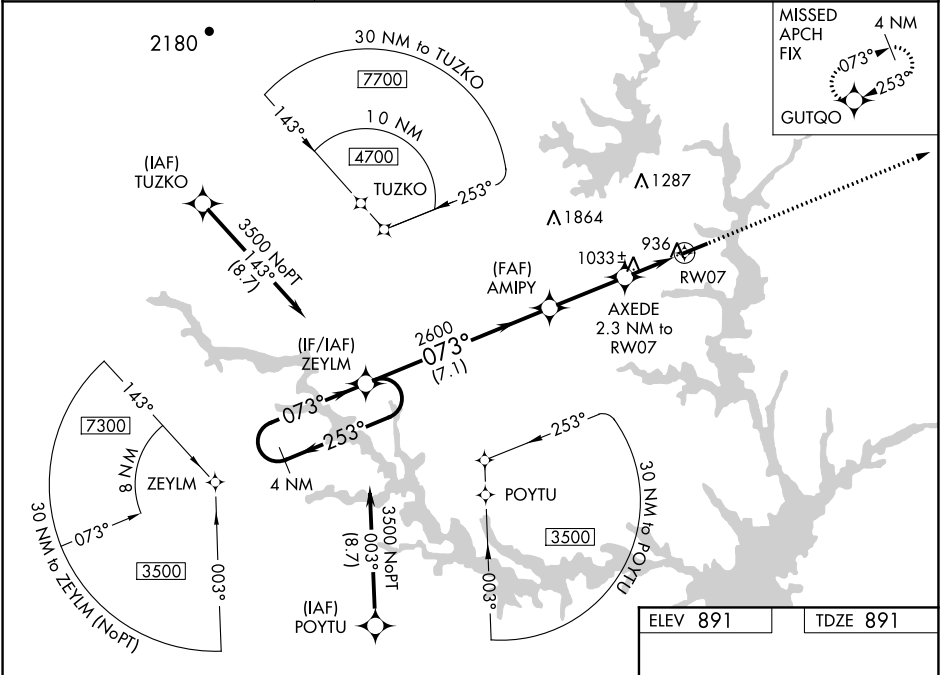
Baro-VNAV NA when using Anderson altimeter setting. For uncompensated Baro-VNAV systems, LNAV/VNAV NA below -6°C (22°F) or above 54°C (130°F). DME/DME RNP-0.3 NA.

⚠

When local altimeter setting not received, use Anderson altimeter setting and increase all DA 47 feet and all MDA 60 feet; increase LPV and LNAV/VNAV Cats A and B, and LNAV Cat C visibility ¼ mile. Helicopter visibility reduction below ¾ SM NA.

MISSED APPROACH:
Climb to 3000 direct GUTQO and hold.

ASOS 119.275	GREER APP CON ★ 118.8 270.275	UNICOM 122.7 (CTAF) 0
------------------------	---	---------------------------------



4 NM Holding Pattern ZEYLM

VGSI and RNAV glidepath not coincident (VGSI Angle 3.00/TCH 39).

3000 GUTQO

GP 3.00° TCH 53

2600

AXEDE 2.3 NM to RW07

*LNNAV only.

*1.2 NM to RW07

RW07

073° to RW07

5000 x 100

0.3% Up

CATEGORY	A	B	C	D
LPV DA	1146-¾	255 (300-¾)	1146-1 255 (300-1)	NA
LNAV/VNAV DA	1144-¾	253 (300-¾)	1144-1 253 (300-1)	NA
LNAV MDA	1300-1	409 (500-1)	1300-1½ 409 (500-1½)	NA
CIRCLING	1300-1 409 (500-1)	1360-1 469 (500-1)	1640-2½ 749 (800-2½)	NA

MIRL Rwy 7-25 0
REIL Rwy 7 and 25 0