

WAAS
CH **77818**
W07A

APP CRS
065°

Rwy Idg **5003**
TDZE **147**
Apt Elev **147**

RNAV (GPS) RWY 7

MARLBORO COUNTY JETPORT-H E AVENT FIELD (BBP)

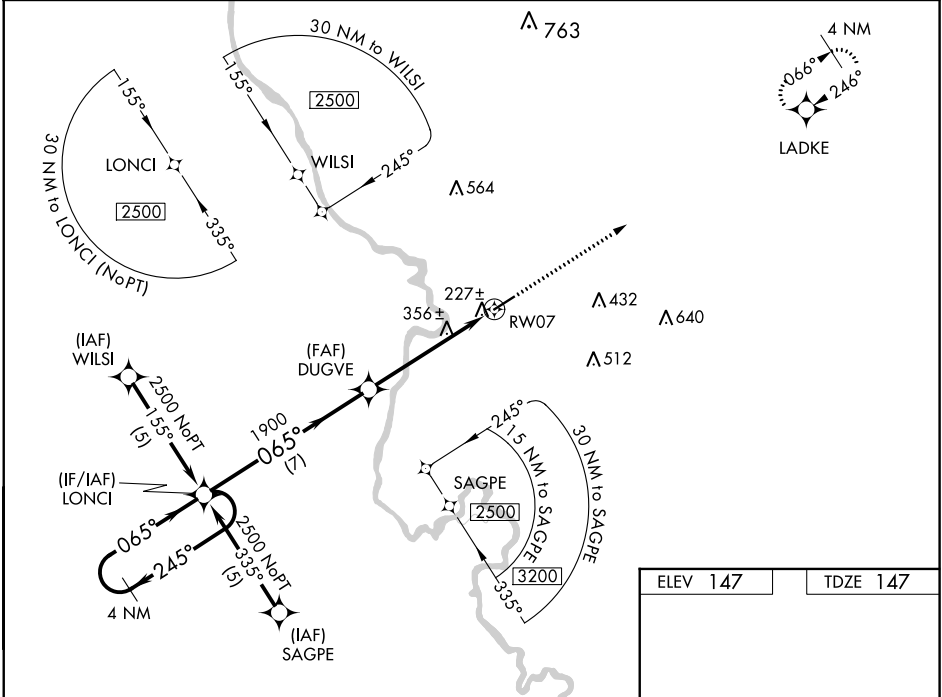
RNP APCH.

▼

Baro-VNAV NA when using Florence altimeter setting. For uncompensated Baro-VNAV systems, LNAV/VNAV NA below -15°C or above 48°C. Rwy 7 helicopter visibility reduction below ¾ SM NA. When local altimeter setting not received, use Florence altimeter setting and increase all DA 61 feet and MDA 80 feet; increase LPV all Cats, LNAV/VNAV all Cats, and LNAV Cats C and Cat D visibility ¼ mile. VDP NA with Florence altimeter setting.

MISSED APPROACH: Climb to 2500 direct LADKE and hold.

AWOS-3PT 123.825	FLORENCE APP CON ★ 118.6 341.7	UNICOM 122.8 (CTAF)
----------------------------	--	-------------------------------



4 NM Holding Pattern

LONCI

2500

GP 3.00° TCH 40

245°

065°

065°

1900

DUGVE

RW07

1.4 NM to RW07

* LNAV only.

2500

LADKE

065° to RW07

CATEGORY	A	B	C	D
LPV DA	437-1 290 (300-1)			
LNAV/VNAV DA	507-1¼ 360 (400-1¼)			
LNAV MDA	620-1 473 (500-1)	620-1¼ 473 (500-1¼)	620-1½ 473 (500-1½)	

MIRL Rwy 7-25
REIL Rws 7 and 25